

Key No.	Part Description
1	Body
2	Handle
3	Stem
4	Stem Retainer
5	Ball
6	Packing
7	Pin

#### 7115 Series 7165 Series 7673 Series

7115G4	7165G2	7673G2Y
7115G6	7165G4	7673G4Y
7115F4	7165G6	7673G6Y
7115H4	7165F4	7673F4Y
7115L4		

#### 7122 Series 7671 Series

7122G4	7671 G4B
7122G6	7671 F4B
7122F4	
7122H4	
7122M4	



## Kit #SP7000K1 7100 & 7600 Series Valves

### Packing Replacement

All Models except 7644

Kit includes: shim washer (1), spacers (2), Teflon® wafers (2), E clip (1).

For Complete Listing of Model Numbers See Back Panel

### DISASSEMBLY

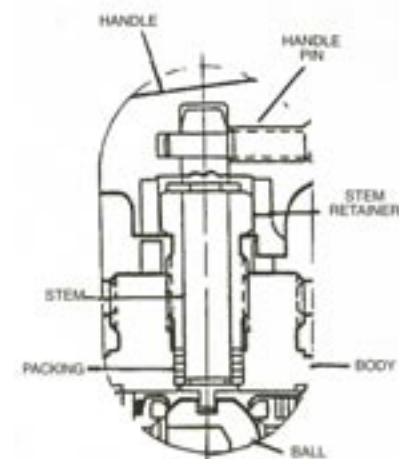
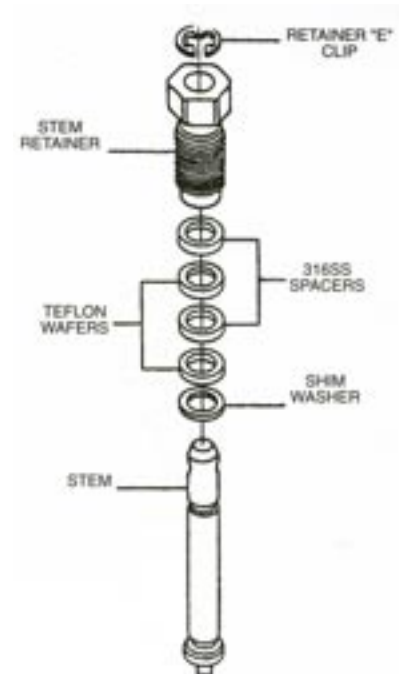
1. Unscrew handle pin and remove handle.
2. Unscrew stem retainer and remove entire assembly.
3. Remove "E" clip and push stem down through stem retainer.
4. Remove all washers from stem.
5. Inspect stem. Replace if tang is damaged or surface is worn. NOTE: If tang is damaged, inspect ball groove through top of valve. Replace if damaged. Use applicable seat kit.

### Lubrication

1. If necessary, clean stem with Acetone or Trichloroethane.
2. Lubricate stem, all the washers, and the threads of the stem retainer with Krytox® 206 or equivalent.

### ASSEMBLY

1. Insert stem into valve so that stem tang engages with groove in ball.
2. Slide shim washer, Teflon® wafer and stainless spacers onto stem as indicated by exploded view.
3. Using a hollow rod, lightly tamp parts into place against shoulder in body.
4. Screw in stem retainer and tighten with 50-60 in. lbs. torque.
5. Assemble "E" clip into large-groove on stem.
6. A. Flomites: Turn stem so hole in ball is in direction of flow.  
B. Selectomites: Turn stem so that right angle hole in ball faces side and bottom ports.
7. Assemble handle to stem aligning the arrow as follows:
  - A. Flomites: Handle will point toward discharge port.
  - B. Selectomites: Handle will point toward side port in direction of flow.
8. Secure handle to stem with pin.
9. Turn handle several times to confirm ease of operation while locking into inlet port to verify ball movement.



**Note: Valve should be tested at operating pressure prior to installation.**

For catalog information, contact your local Hoke stocking distributor or call Hoke, Inc. at (864) 574-7966.



Hoke, Inc.  
405 Centura Court  
Spartanburg, SC 29303

DISASSEMBLY

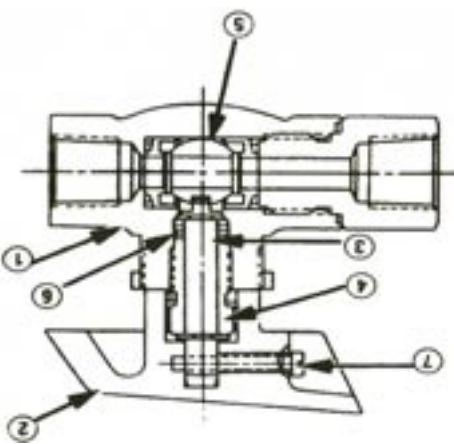
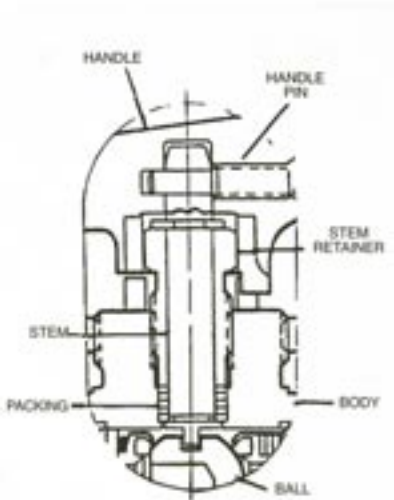
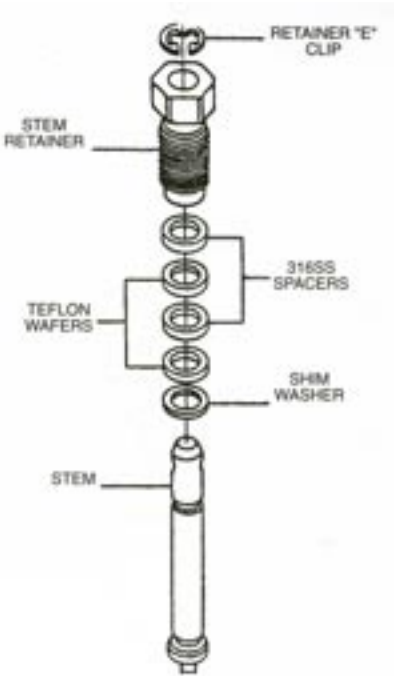
- 1. Unscrew handle pin and remove handle.
- 2. Unscrew stem retainer and remove entire assembly.
- 3. Remove "E" clip and push stem down through stem retainer.
- 4. Remove all washers from stem.
- 5. Inspect stem. Replace if tang is damaged or surface is worn. NOTE: If tang is damaged, inspect ball groove through top of valve. Replace if damaged. Use applicable seat kit.

Lubrication

- 1. If necessary, clean stem with Acetone or Trichloroethane.
- 2. Lubricate stem, all the washers, and the threads of the stem retainer with Krytox® 206 or equivalent.

ASSEMBLY

- 1. Insert stem into valve so that stem tang engages with groove in ball.
- 2. Slide shim washer, Teflon® wafer and stainless spacers onto stem as indicated by exploded view.
- 3. Using a hollow rod, lightly tamp parts into place against shoulder in body.
- 4. Screw in stem retainer and tighten with 50-60 in. lbs. torque.
- 5. Assemble "E" clip into large-groove on stem.
- 6. A. Flomites: Turn stem so hole in ball is in direction of flow.  
B. Selectomites: Turn stem so that right angle hole in ball faces side and bottom ports.
- 7. Assemble handle to stem aligning the arrow as follows:  
A. Flomites: Handle will point toward discharge port.  
B. Selectomites: Handle will point toward side port in direction of flow.
- 8. Secure handle to stem with pin.
- 9. Turn handle several times to confirm ease of operation while locking into inlet port to verify ball movement.



Pin	7
Packing	6
Ball	5
Stem Retainer	4
Stem	3
Handle	2
Body	1
Key No.	Part Description
7100 & 7600 Series Valves	

7115 Series	7165 Series	7673 Series
7115G4	7165G2	7673G2Y
7115G6	7165G4	7673G4Y
7115F4	7165G6	7673G6Y
7115H4	7165F4	7673F4Y
7115L4		
7122 Series	7671 Series	
7122G4	7671 G4B	
7122G6	7671 F4B	
7122F4		
7122H4		
7122M4		



Kit #SP7000K1  
7100 &  
7600 Series  
Valves

Packing  
Replacement

All Models except 7644

For catalog information, contact your local Hoke stocking distributor or call Hoke, Inc. at (864) 574-7966.



Hoke, Inc.  
405 Centura Court  
Spartanburg, SC 29303

Note: Valve should be tested at operating pressure prior to installation.

Kit includes: shim washer (1), spacers (2), Teflon® wafers (2), E clip (1).

For Complete Listing of Model Numbers See Back Panel