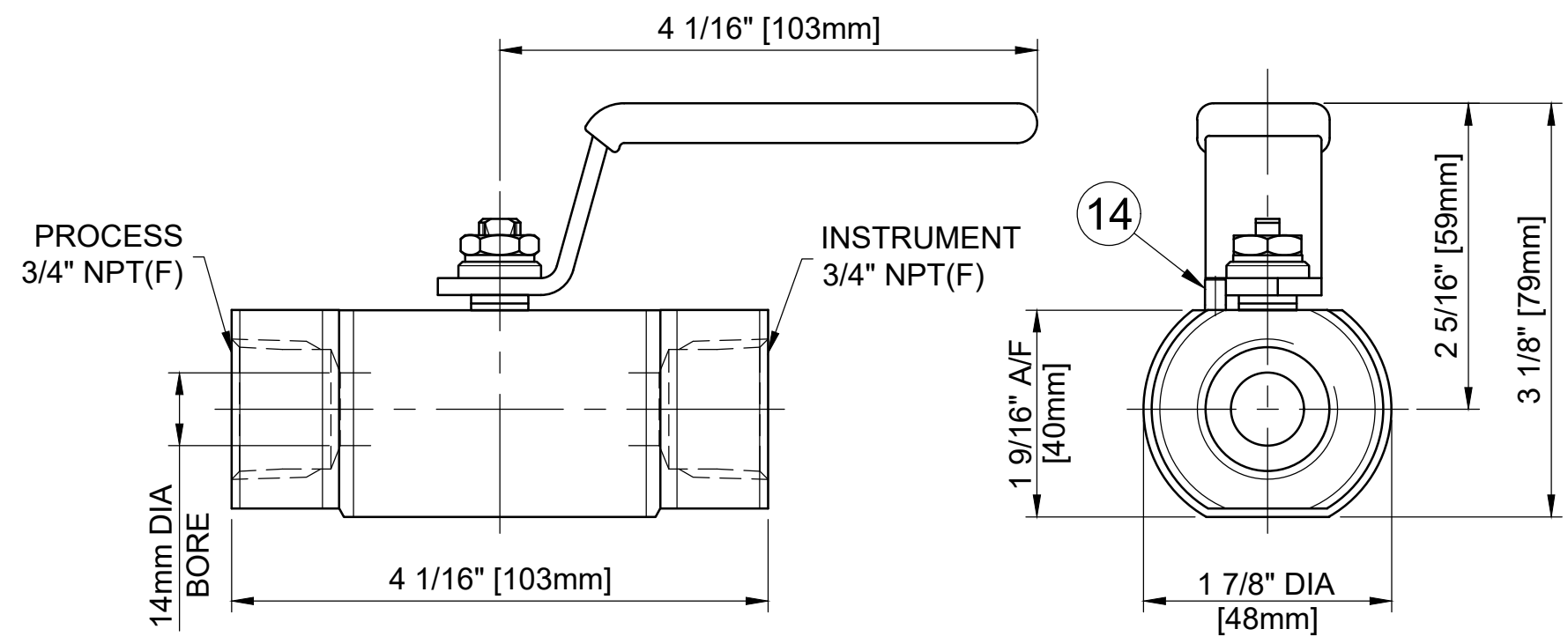


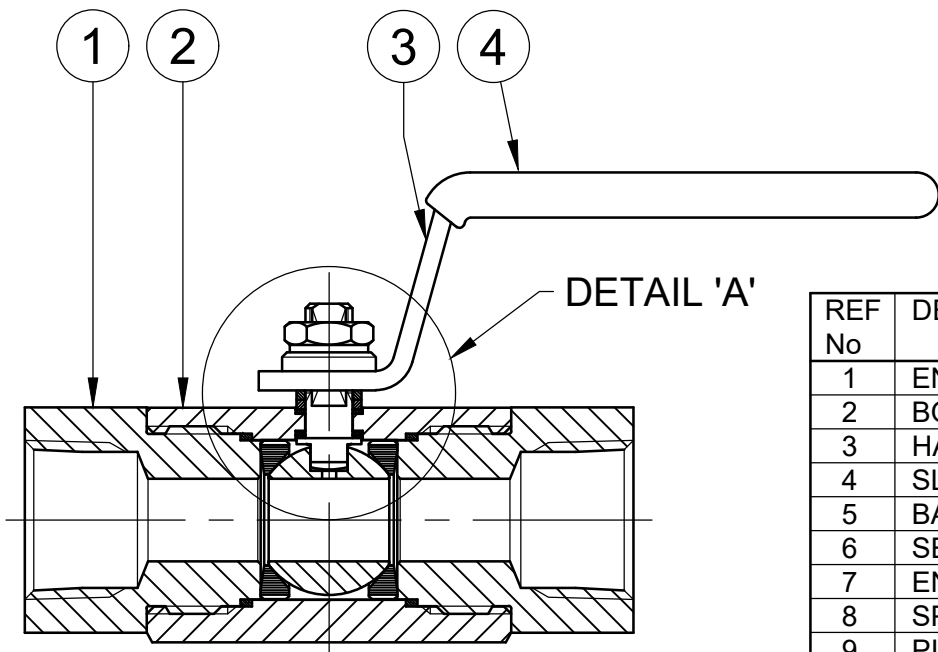
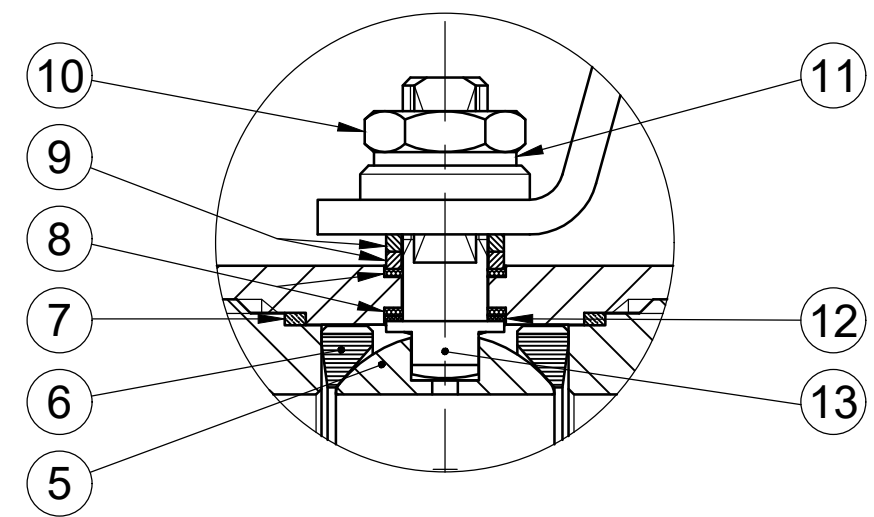
**MAXIMUM WORKING CONDITIONS**  
**COLD WORKING PRESSURE:**  
 STANDARD, 6,000PSI (414BAR)  
 (AT REDUCED TEMPERATURE)

**TEMPERATURE:**  
 -29°C (-20.2°F) TO 200°C (392°F)  
 (AT REDUCED PRESSURE)

**APPROX WEIGHT**  
 0.7Kg

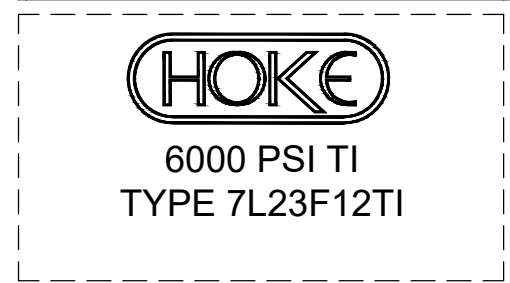


**DETAIL 'A'**



REF No	DESCRIPTION	MATERIAL
		TITANIUM
1	END CONNECTOR	ASTM B348 GR 5
2	BODY	ASTM B348 GR 5
3	HANDLE	316 SS
4	SLEEVE	PVC
5	BALL	ASTM B348 GR 5
6	SEAT	PEEK
7	END CONNECTOR SEAL	100% VIRGIN PTFE
8	SPINDLE SEALS	15% GLASS FILLED PTFE
9	PISTON RING	316 SS
10	NUT	A4 [316] SS
11	SERRATED WASHER	316 SS
12	THRUST SEAL	25% GLASS FILLED PTFE
13	SPINDLE	ASTM B348 GR 5
14	HANDLE STOP PIN	316 SS

**MARKING DETAILS**  
 (MARKING REFERENCE ONLY)



**REMARK**

- ADDITIONAL TAG PLATE FOR ADDITIONAL INFO UPON REQUESTED
- HCT HEAT CODE TRACEABILITY WILL BE MARKED ON BODY & END FITTINGS

THE INFORMATION CONTAINED IN THIS DRAWING IS THE PROPERTY OF CRANE COMPANY. ANY REPRODUCTION IN PART OR AS A WHOLE WITHOUT THE WRITTEN PERMISSION OF CRANE COMPANY IS PROHIBITED.	APPROVALS		DATE	SPARTANBURG, SOUTH CAROLINA 29303
	CREATED	JQ	04/10/23	
REMOVE ALL BURRS, DO NOT SCALE DRAWING, DRILL POINTS STD	DRAWN	JQ	04/10/23	TITLE GENERAL ARRANGEMENT - 14mm BORE SINGLE ISOLATE BALL VALVE WITH 3/4" NPT FEMALE CONNECTIONS.
BREAK CORNERS 0.005 - 0.010	APPROVED	ZL	11/10/23	
UNLESS OTHERWISE SPECIFIED, DIMENSIONS ARE IN INCHES TOLERANCES ARE: .XXX +.005 ANGLES ±.1° .XX +.010 CONCENTRICITY ±.0015 .X +.060 MACHINE FINISH: 63RMS	EC NUMBER	X		SIZE A3 SCALE N.T.S.
		INITIAL USAGE (REF ONLY)	X	
	CAD FILE NAME			TECH NO. XXXXX