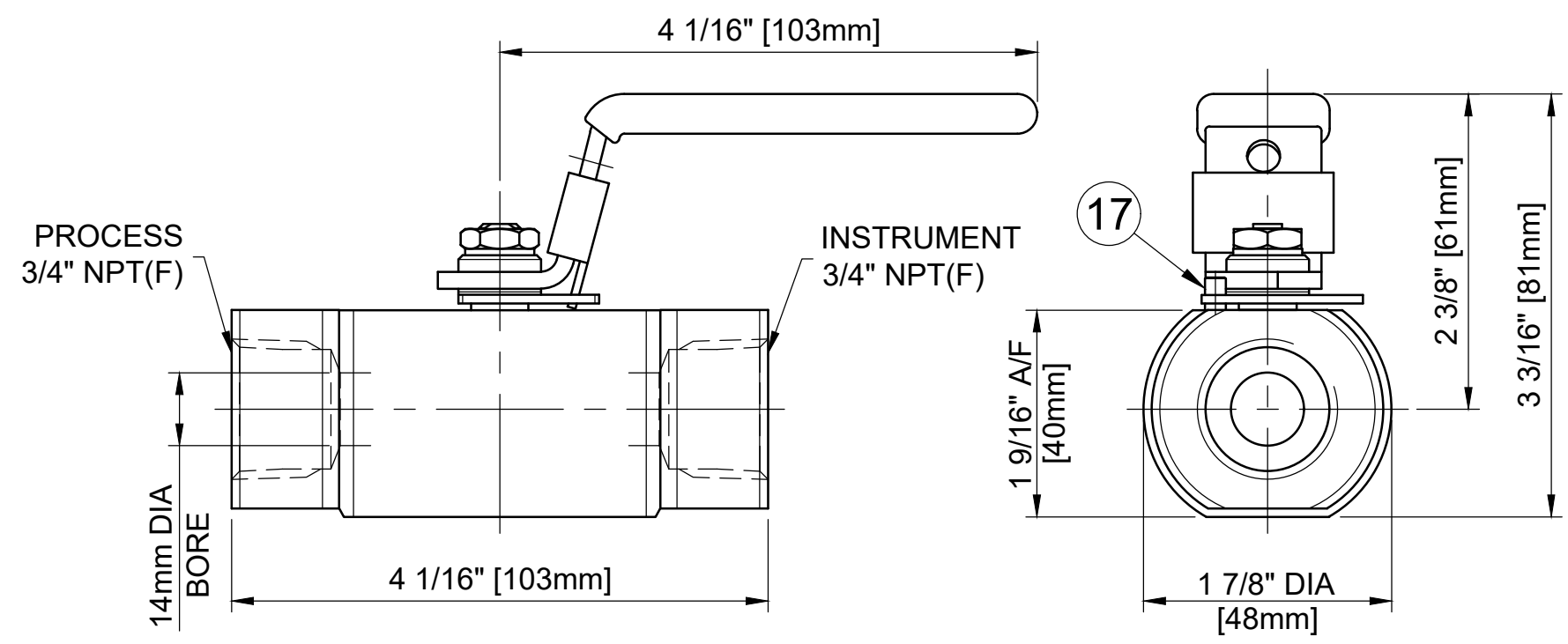


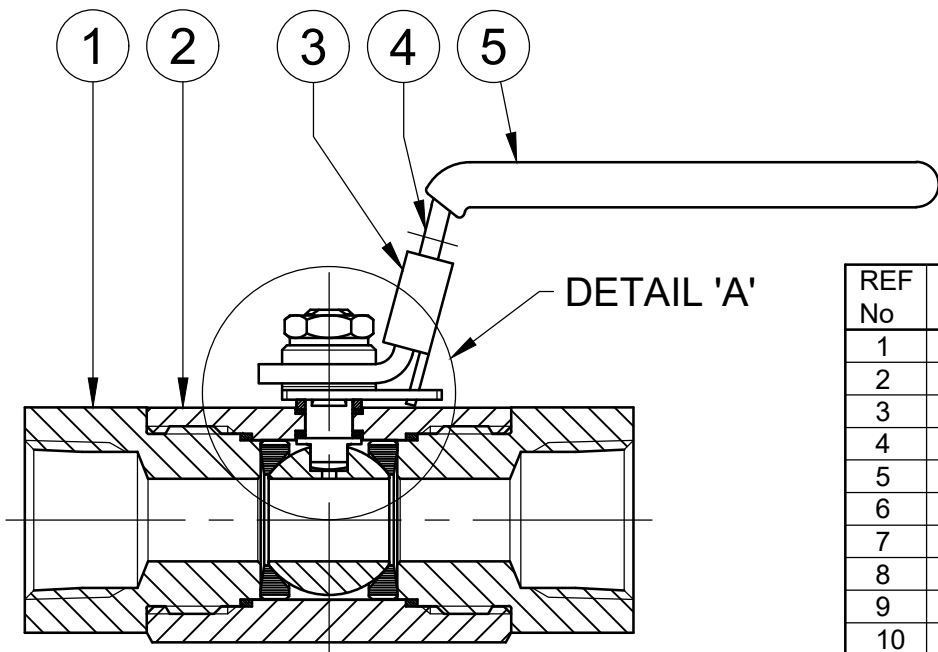
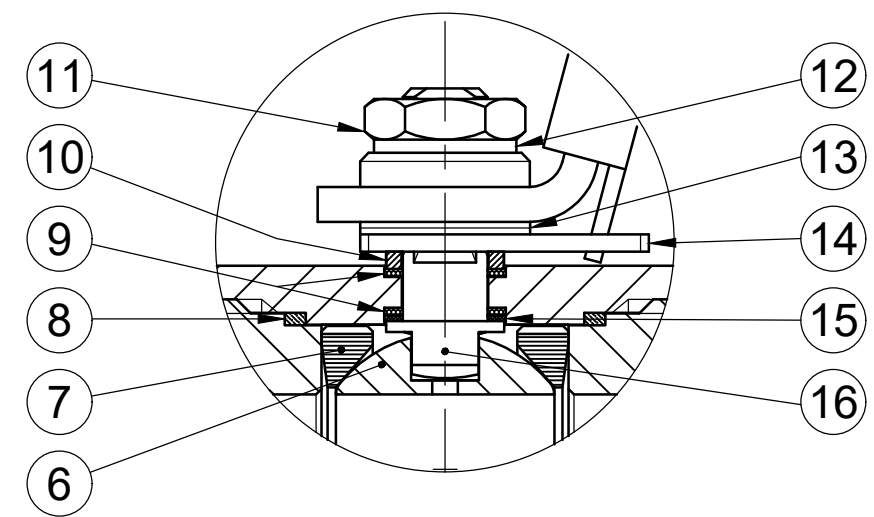
MAXIMUM WORKING CONDITIONS
 COLD WORKING PRESSURE:
 STANDARD, 6,000PSI (414BAR)
 (AT REDUCED TEMPERATURE)

TEMPERATURE:
 -29°C (-20.2°F) TO 200°C (392°F)
 (AT REDUCED PRESSURE)

APPROX WEIGHT
 0.7Kg



DETAIL 'A'



REF No	DESCRIPTION	MATERIAL
		TITANIUM
1	END CONNECTOR	ASTM B348 GR 2
2	BODY	ASTM B348 GR 2
3	LOCKTAB	316 SS
4	HANDLE	316 SS
5	SLEEVE	PVC
6	BALL	ASTM B348 GR 2
7	SEAT	PEEK
8	END CONNECTOR SEAL	100% VIRGIN PTFE
9	SPINDLE SEALS	15% GLASS FILLED PTFE
10	PISTON RING	316 SS
11	NUT	A4 [316] SS
12	SERRATED WASHER	316 SS
13	DISC SPRING	316 SS
14	LOCKING PLATE	316 SS
15	THRUST SEAL	25% GLASS FILLED PTFE
16	SPINDLE	ASTM B348 GR5
17	HANDLE STOP PIN	316 SS

MARKING DETAILS
 (MARKING REFERENCE ONLY)



REMARK

- ADDITIONAL TAG PLATE FOR ADDITIONAL INFO UPON REQUESTED
- HCT HEAT CODE TRACEABILITY WILL BE MARKED ON BODY & END FITTINGS

THE INFORMATION CONTAINED IN THIS DRAWING IS THE PROPERTY OF CRANE COMPANY. ANY REPRODUCTION IN PART OR AS A WHOLE WITHOUT THE WRITTEN PERMISSION OF CRANE COMPANY IS PROHIBITED.

APPROVALS	DATE
CREATED JQ	04/10/23
DRAWN JQ	04/10/23
APPROVED ZL	11/10/23

REMOVE ALL BURRS, DO NOT SCALE DRAWING, DRILL POINTS STD

BREAK CORNERS 0.005 - 0.010

UNLESS OTHERWISE SPECIFIED, DIMENSIONS ARE IN INCHES

TOLERANCES ARE:

.XXX +.005	ANGLES ±.1°
.XX +.010	CENTRICITY ±.0015
.X +.060	MACHINE FINISH: 63RMS

EC NUMBER	X
INITIAL USAGE (REF ONLY)	X
CAD FILE NAME	

CRANE	HOKE
SPARTANBURG, SOUTH CAROLINA 29303	
TITLE: GENERAL ARRANGEMENT - 14mm BORE SINGLE ISOLATE BALL VALVE WITH 3/4" NPT FEMALE CONNECTIONS & HANDLE LOCKING.	
SIZE: A3	SCALE: N.T.S.
DWG NO: A18633	SHEET 1 OF 1