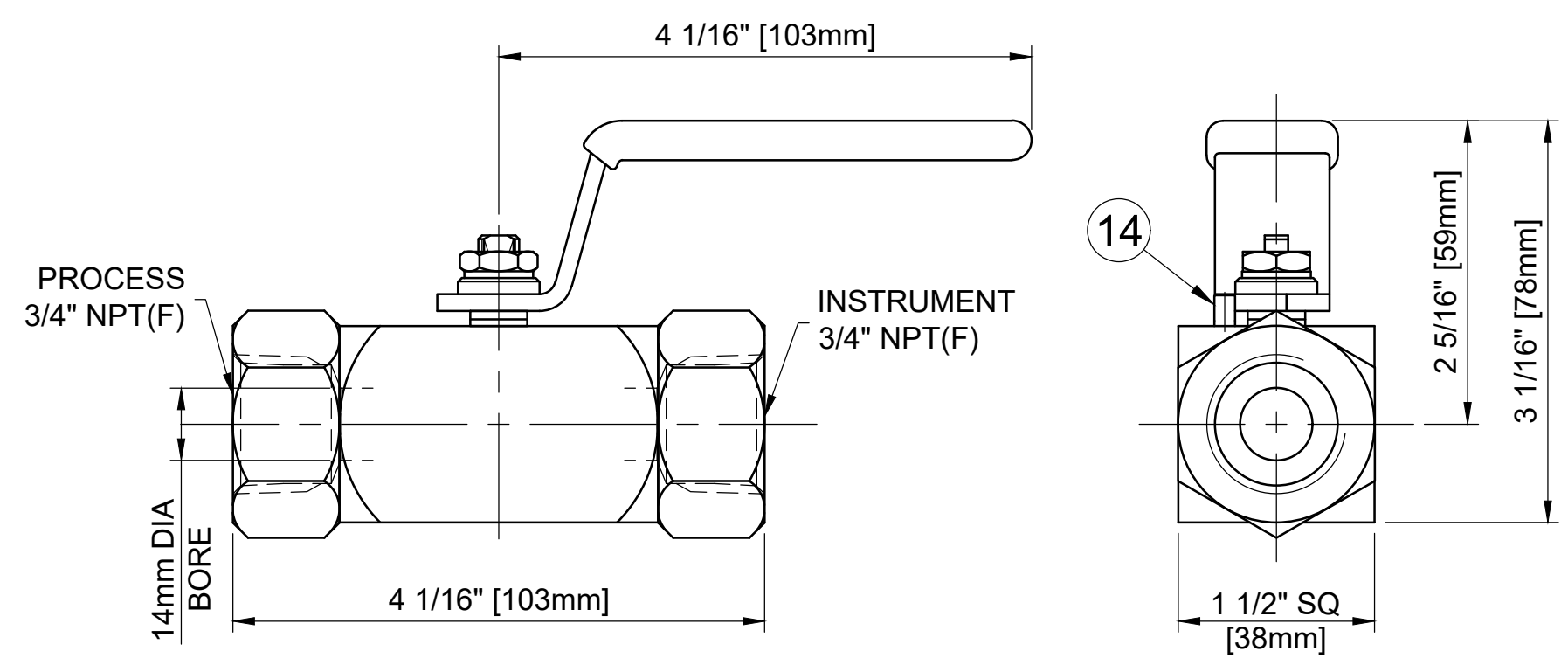


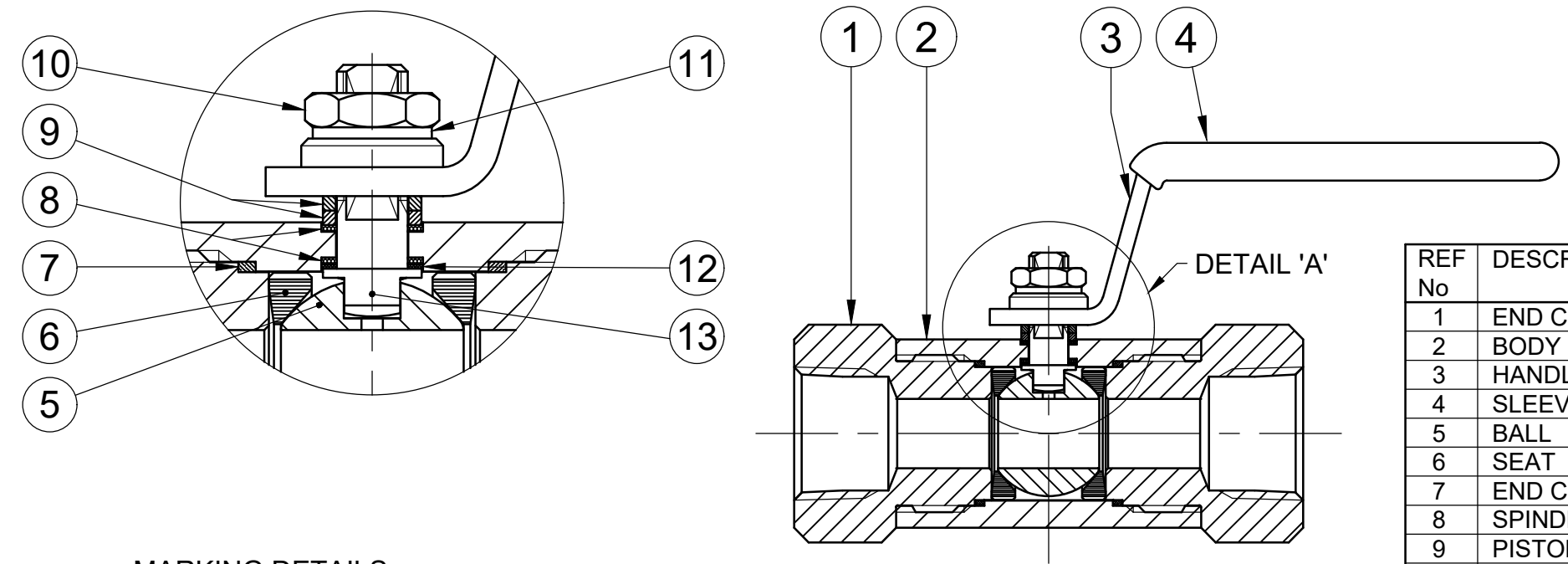
MAXIMUM WORKING CONDITIONS
 COLD WORKING PRESSURE:
 STANDARD, 6,000PSI (414BAR)
 (AT REDUCED TEMPERATURE)

TEMPERATURE:
 -29°C (-20.2°F) TO 200°C (392°F)
 (AT REDUCED PRESSURE)

APPROX WEIGHT
 1.2Kg



DETAIL 'A'



REF No	DESCRIPTION	MATERIAL
		STAINLESS
1	END CONNECTOR	ASTM A276/A479 316
2	BODY	ASTM A276/A479 316
3	HANDLE	316 SS
4	SLEEVE	PVC
5	BALL	ASTM A276/A479 316
6	SEAT	PEEK
7	END CONNECTOR SEAL	100% VIRGIN PTFE
8	SPINDLE SEALS	15% GLASS FILLED PTFE
9	PISTON RING	316 SS
10	NUT	A4 [316] SS
11	SERRATED WASHER	316 SS
12	THRUST SEAL	25% GLASS FILLED PTFE
13	SPINDLE	ASTM A276/A479 UNS S31803
14	HANDLE STOP PIN	316 SS

MARKING DETAILS
 (MARKING REFERENCE ONLY)



REMARK

- ADDITIONAL TAG PLATE FOR ADDITIONAL INFO UPON REQUESTED
- HCT HEAT CODE TRACEABILITY WILL BE MARKED ON BODY & END FITTINGS

THE INFORMATION CONTAINED IN THIS DRAWING IS THE PROPERTY OF CRANE COMPANY. ANY REPRODUCTION IN PART OR AS A WHOLE WITHOUT THE WRITTEN PERMISSION OF CRANE COMPANY IS PROHIBITED.

APPROVALS	DATE	
CREATED JQ	04/10/23	
DRAWN JQ	04/10/23	SPARTANBURG, SOUTH CAROLINA 29303 TITLE GENERAL ARRANGEMENT - 14mm BORE SINGLE ISOLATE BALL VALVE WITH 3/4" NPT FEMALE CONNECTIONS.
APPROVED ZL	11/10/23	
BREAK CORNERS 0.005 - 0.010	UNLESS OTHERWISE SPECIFIED, DIMENSIONS ARE IN INCHES	EC NUMBER X INITIAL USAGE (REF ONLY) X CAD FILE NAME
TOLERANCES ARE: .XXX +.005 ANGLES ±.41° .XX +.010 CONCENTRICITY ±.0015 .X +.060 MACHINE FINISH: 63RMS		SIZE A3 SCALE N.T.S. DWG NO. A18634 SHEET 1 OF 1