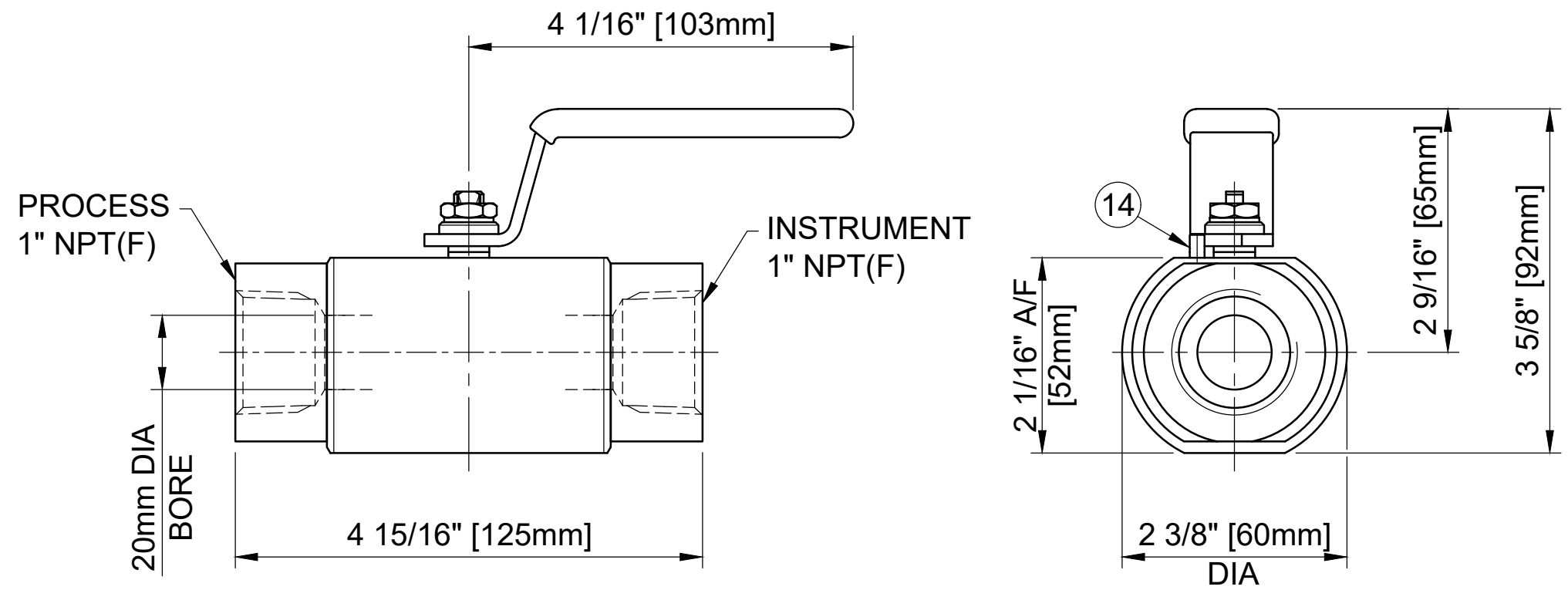


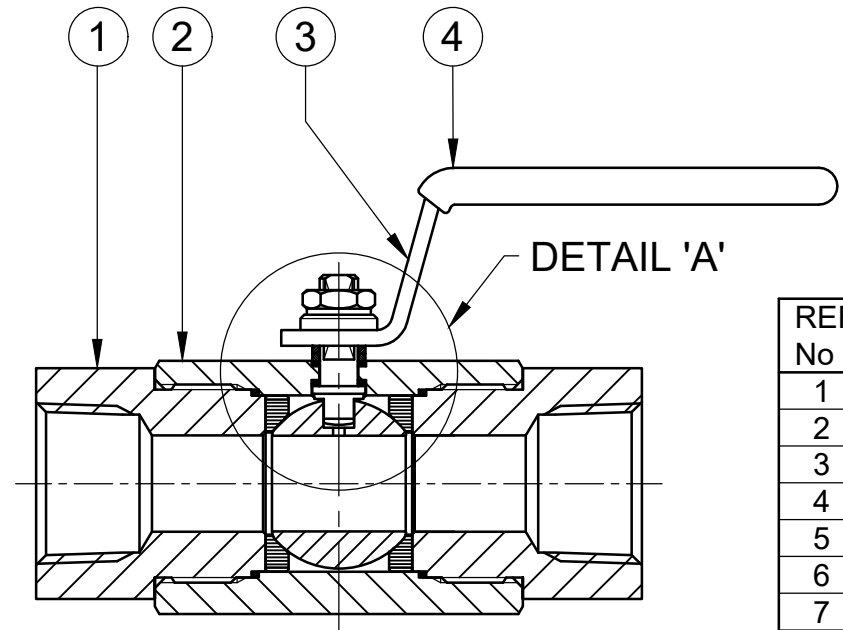
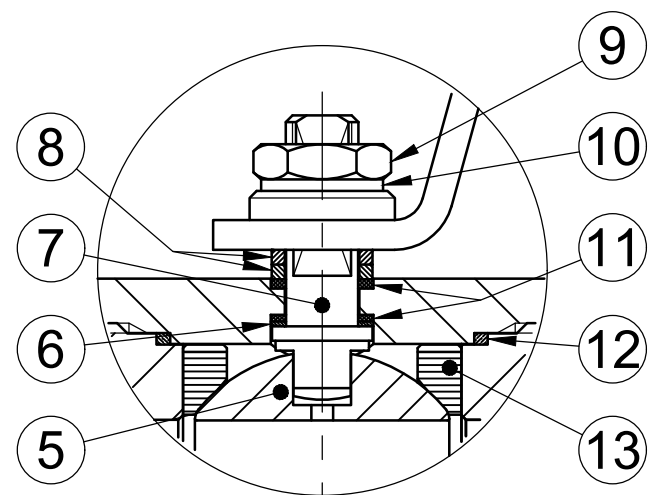
MAXIMUM WORKING CONDITIONS
 COLD WORKING PRESSURE:
 STANDARD, 6,000PSI (414BAR)
 (AT REDUCED TEMPERATURE)

TEMPERATURE:
 -29°C (-20.2°F) TO 200°C (392°F)
 (AT REDUCED PRESSURE)

APPROX WEIGHT
 2.1Kg



DETAIL 'A'



REF No	DESCRIPTION	MATERIAL
		6MO
1	END CONNECTOR	ASTM A276/A479 UNS S31254
2	BODY	ASTM A276/A479 UNS S31254
3	HANDLE	316 SS
4	SLEEVE	PVC
5	BALL	ASTM A276/A479 UNS S31254
6	THRUST SEAL	25% GLASS FILLED PTFE
7	SPINDLE	API 6ACRA UNS N07718
8	PISTON RING	316 SS
9	NUT	A4 [316] SS
10	SERRATED WASHER	316 SS
11	SPINDLE SEALS	15% GLASS FILLED PTFE
12	END CONNECTOR SEAL	100% VIRGIN PTFE
13	SEAT	PEEK
14	HANDLE STOP PIN	316 SS

MARKING DETAILS
 (MARKING REFERENCE ONLY)



REMARK

- ADDITIONAL TAG PLATE FOR ADDITIONAL INFO UPON REQUESTED
- HCT HEAT CODE TRACEABILITY WILL BE MARKED ON BODY & END FITTINGS

THE INFORMATION CONTAINED IN THIS DRAWING IS THE PROPERTY OF CRANE COMPANY. ANY REPRODUCTION IN PART OR AS A WHOLE WITHOUT THE WRITTEN PERMISSION OF CRANE COMPANY IS PROHIBITED.

APPROVALS	DATE	
CREATED JQ	10/10/23	
DRAWN JQ	10/10/23	SPARTANBURG, SOUTH CAROLINA 29303 TITLE GENERAL ARRANGEMENT - 20mm BORE SINGLE ISOLATE BALL VALVE WITH 1" NPT FEMALE CONNECTIONS.
APPROVED ZL	11/10/23	
EC NUMBER X		SIZE A3
INITIAL USAGE (REF ONLY) X		SCALE N.T.S.
CAD FILE NAME		DWG NO. A18636
		SHEET 1 OF 1

TOLERANCES ARE:
 .XXX +.005 ANGLE .1°
 .XX +.010 CONCENTRICITY .0015
 .X +.060 MACHINE FINISH 6.3RMS