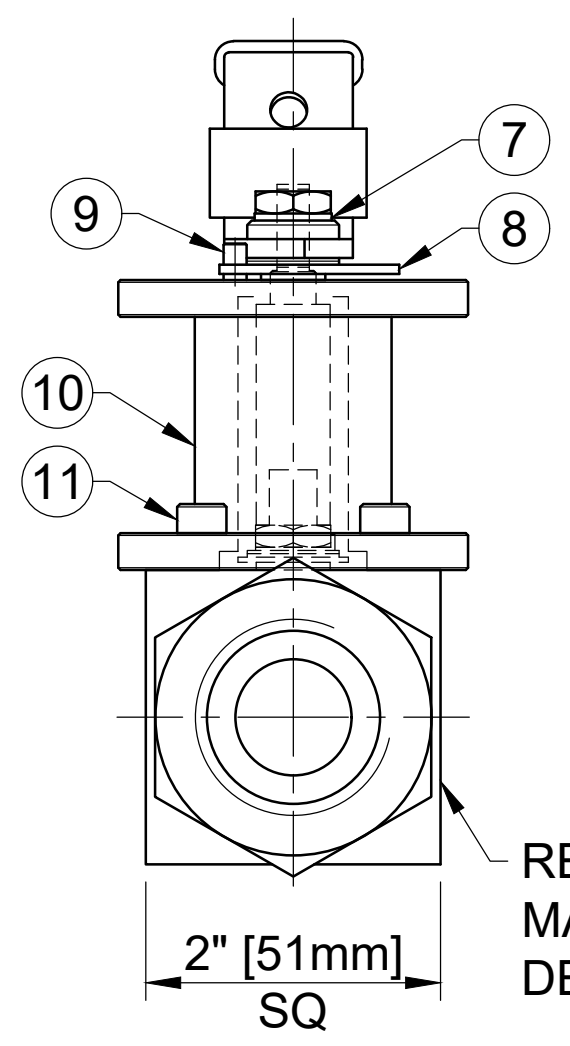
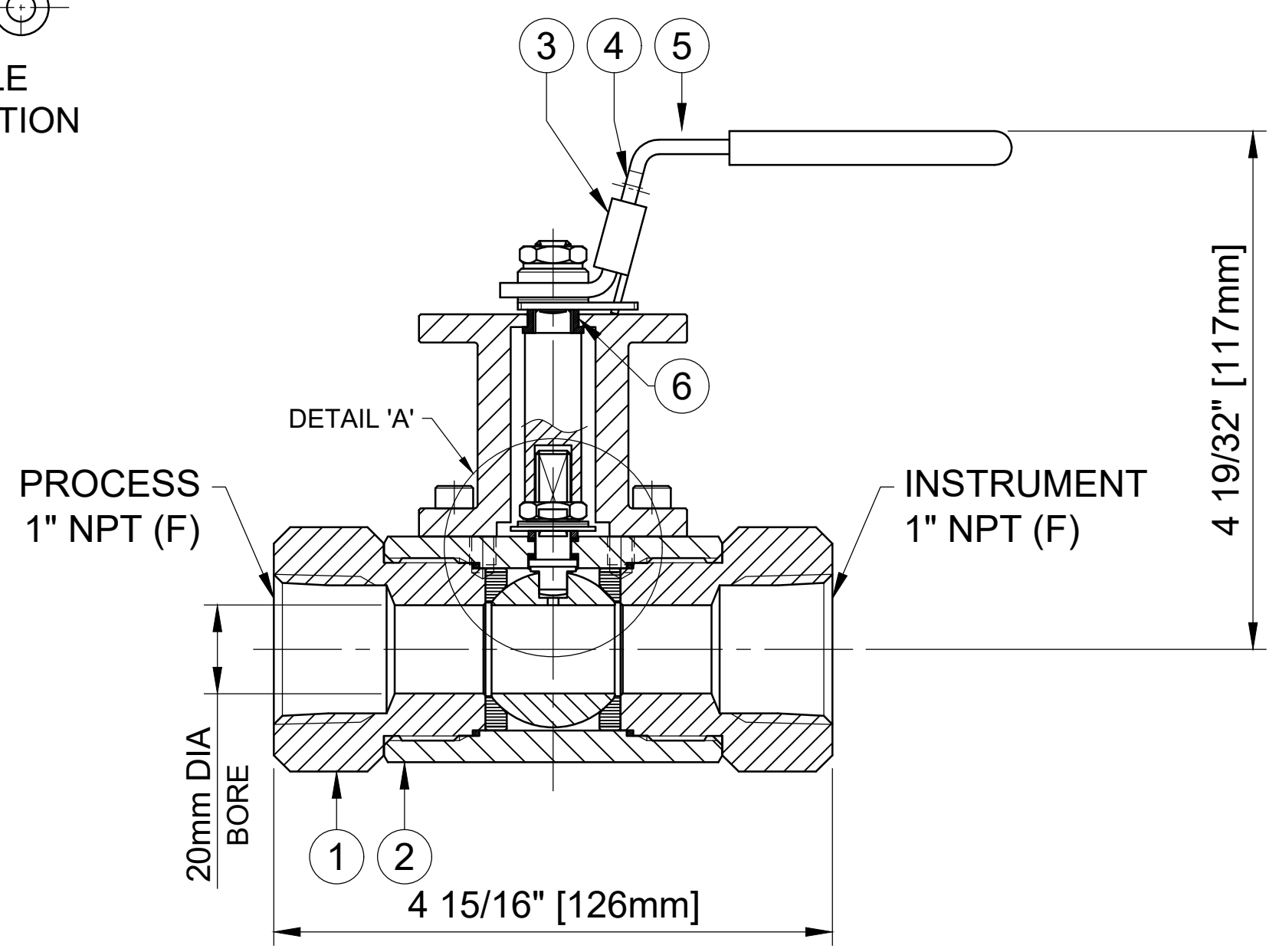


MAXIMUM WORKING CONDITIONS
COLD WORKING PRESSURE:
 STANDARD, 6,000PSI (414BAR)
 (AT REDUCED TEMPERATURE)

TEMPERATURE:
 -29°C (-20.2°F) TO 200°C (392°F)
 (AT REDUCED PRESSURE)

NACE MR-01-75 (LATEST REVISION)
 ALL VALVES MEET NACE REQUIREMENTS

APPROX WEIGHT
 2.6 Kg



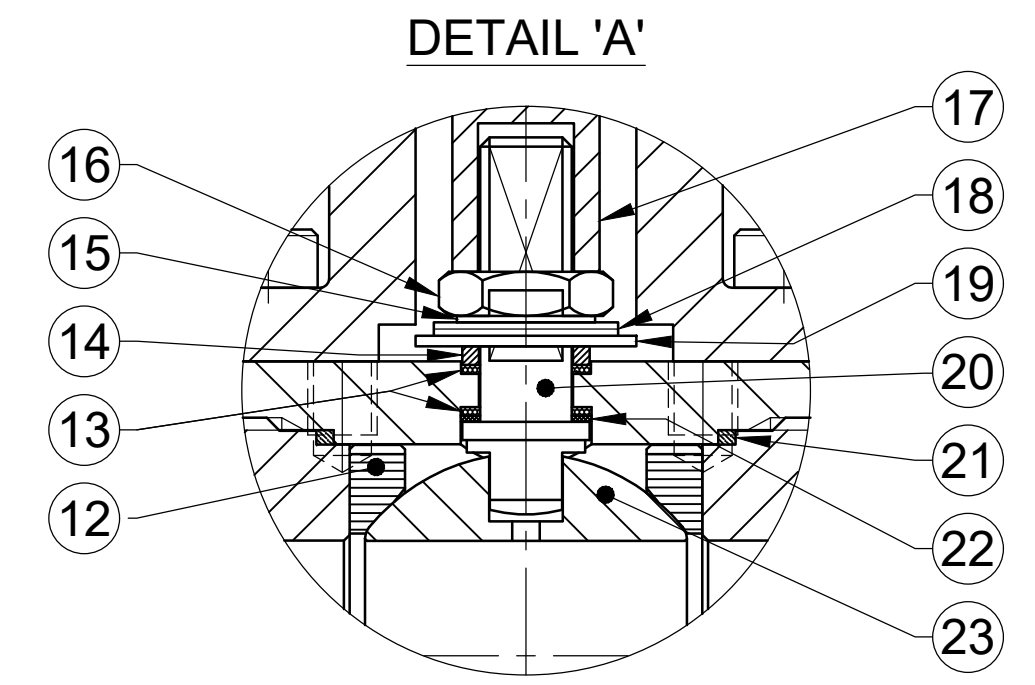
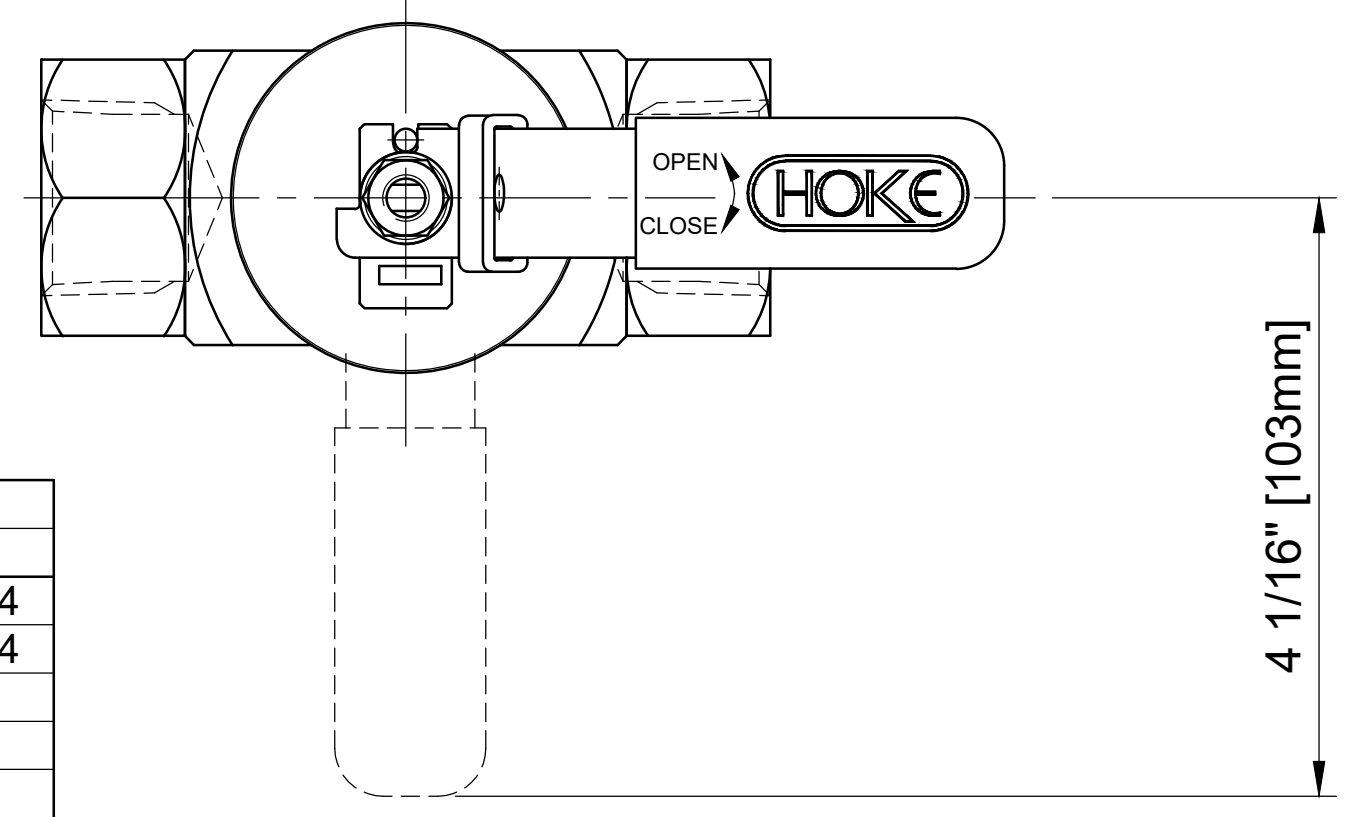
MARKING DETAILS
 (MARKING REFERENCE ONLY)

6000 PSI UNS S31254
 TYPE 7L23F166MOAO-
 XH50-LT-PK

REMARK

- ADDITIONAL TAG PLATE FOR ADDITIONAL INFO UPON REQUESTED
- HCT HEAT CODE TRACEABILITY WILL BE MARKED ON BODY & END FITTINGS

REFER MARKING DETAILS



REF No	DESCRIPTION	MATERIAL
		6MO
1	END CONNECTOR	ASTM A276 / A479 UNS S31254
2	BODY	ASTM A276 / A479 UNS S31254
3	LOCKING TAB	316 SS
4	HANDLE	316 SS
5	SLEEVE	PVC
6	EXTENSION BUSH	TBA
7	SERRATED WASHER	316 SS
8	LOCKING PLATE	316 SS
9	HANDLE STOP PIN	316 SS
10	EXTENSION CAP	316 SS
11	CAP SCREW	316 SS
12	SEAT	PEEK
13	SPINDLE SEALS	15% GLASS FILLED PTFE
14	PISTON RING	316 SS
15	LOCK TAB	316 SS
16	NUT	A4 [316] SS
17	EXTENSION SPINDLE	API 6A CRA UNS N07718
18	DISC SRRING	316 SS
19	ANTI TORQUE PLATE	316 SS
20	SPINDLE	API 6A CRA UNS N07718
21	BODY SEAL	100% VIRGIN PTFE
22	SPINDLE SEAL	25% GLASS FILLED PTFE
23	BALL	ASTM A276 / A479 UNS S31254

**HANDLE IS PRESSURE SENSITIVE PART
 DO NOT STEP OR CARRY BY THE HANDLE**

THE INFORMATION CONTAINED IN THIS DRAWING IS THE PROPERTY OF CRANE COMPANY. ANY REPRODUCTION IN PART OR AS A WHOLE, WITHOUT THE WRITTEN PERMISSION OF CRANE COMPANY IS PROHIBITED.		APPROVALS		DATE	
REMOVE ALL BURRS, DO NOT SCALE DRAWING, DRILL POINTS STD		CREATED	ZL	16/01/2024	
BREAK CORNERS 0.005 - 0.010		DRAWN	ZL	16/01/2024	TITLE 20mm BORE SINGLE ISOLATE BALL VALVE WITH NPT CONNECTIONS WITH EXTENDED HANDLE CAP SIZE C SCALE N.T.S.
UNLESS OTHERWISE SPECIFIED, DIMENSIONS ARE IN INCHES		APPROVED	GT	17/01/2024	
TOLERANCES ARE: .XXX = ±.005 .XX = ±.010 .X = ±.060 ANGLES ±.51° CONCENTRICITY ±.0015 MACHINE FINISH: 6.3RMS		EC NUMBER	X		
		INITIAL USAGE (REF ONLY)	X		DWG NO. A18809
		CAD FILE NAME			REV B
				SHEET 1 OF 1	