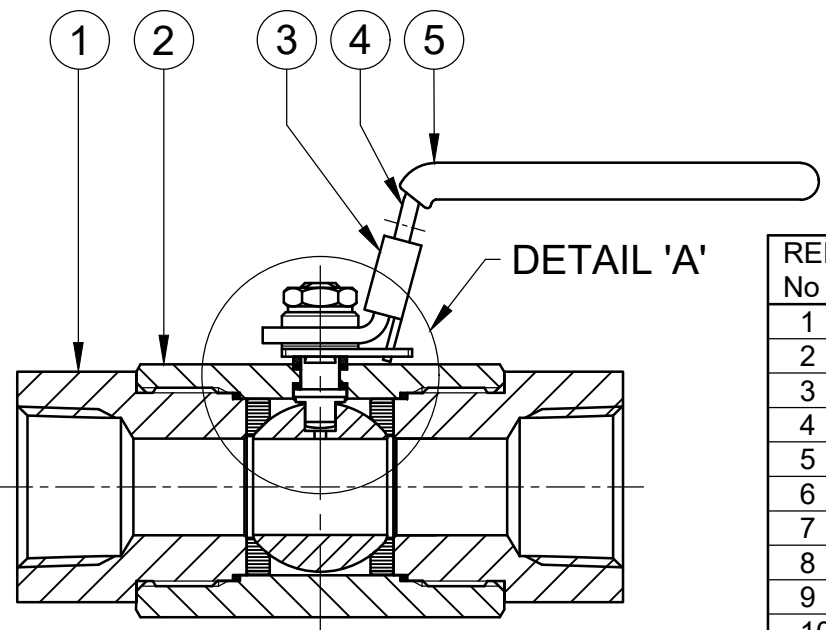
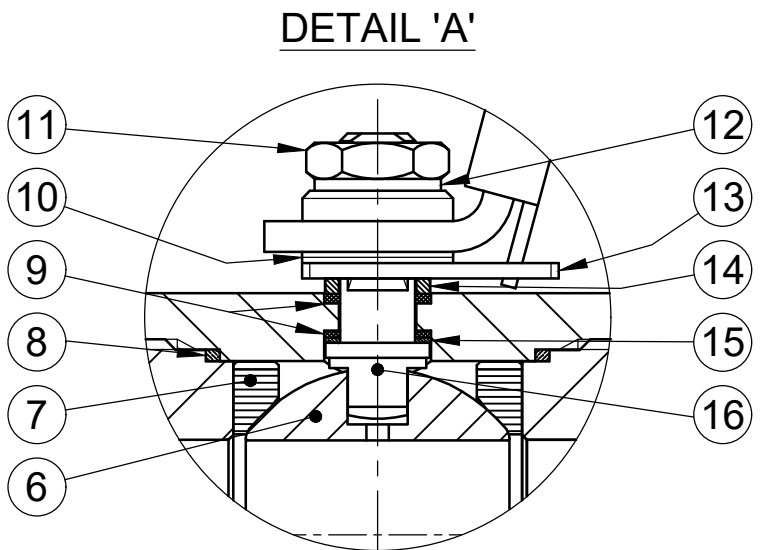
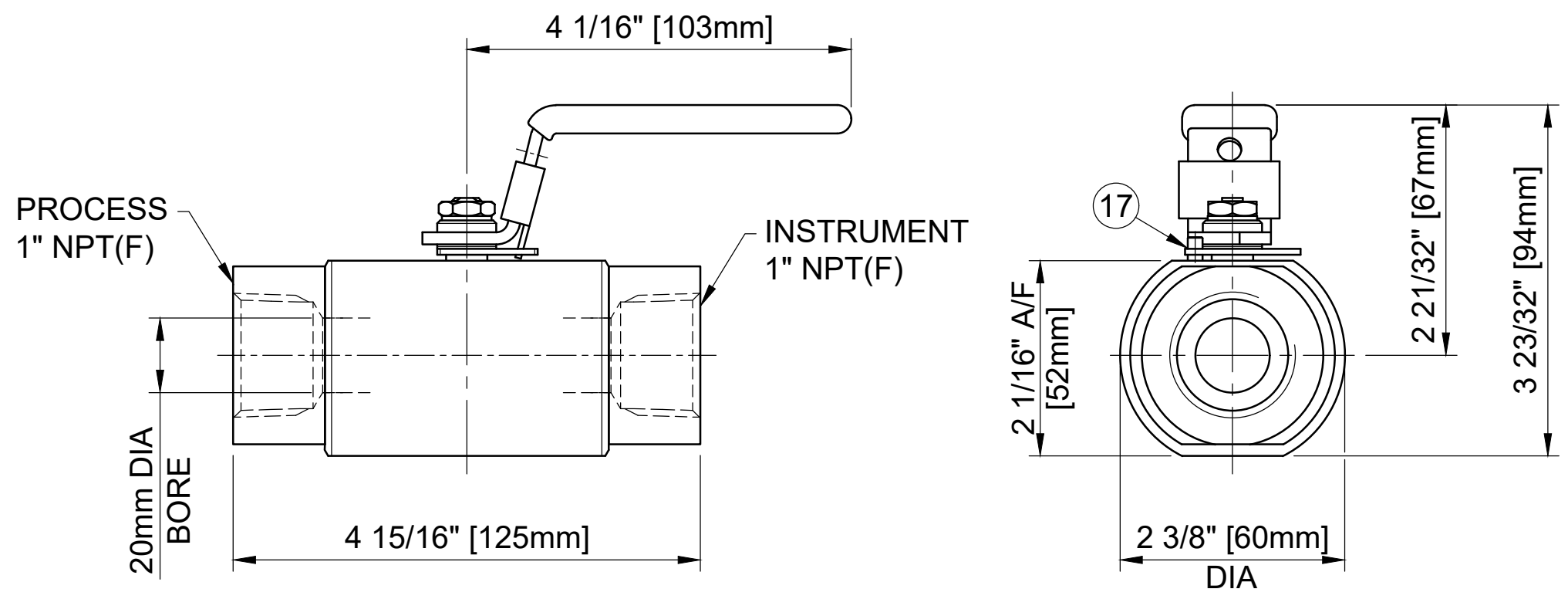


**MAXIMUM WORKING CONDITIONS**  
 COLD WORKING PRESSURE:  
 STANDARD, 6,000PSI (414BAR)  
 (AT REDUCED TEMPERATURE)

TEMPERATURE:  
 -29°C (-20.2°F) TO 200°C (392°F)  
 (AT REDUCED PRESSURE)

APPROX WEIGHT  
 2.3Kg



REF No	DESCRIPTION	MATERIAL
		HASTELLOY C276
1	END CONNECTOR	ASTM B574 UNS N10276
2	BODY	ASTM B574 UNS N10276
3	LOCK TAB	316 SS
4	HANDLE	316 SS
5	SLEEVE	PVC
6	BALL	ASTM B574 UNS N10276
7	SEAT	PEEK
8	END CONNECTOR SEAL	100% VIRGIN PTFE
9	SPINDLE SEALS	15% GLASS FILLED PTFE
10	DISC SPRING	316 SS
11	NUT	A4 [316] SS
12	SERRATED WASHER	316 SS
13	LOCKING PLATE	316 SS
14	PISTON RING	316 SS
15	THRUST SEAL	25% GLASS FILLED PTFE
16	SPINDLE	API 6ACRA UNS N07718
17	HANDLE STOP PIN	316 SS

MARKING DETAILS  
 (MARKING REFERENCE ONLY)



REMARK

- ADDITIONAL TAG PLATE FOR ADDITIONAL INFO UPON REQUESTED
- HCT HEAT CODE TRACEABILITY WILL BE MARKED ON BODY & END FITTINGS

THE INFORMATION CONTAINED IN THIS DRAWING IS THE PROPERTY OF CRANE COMPANY. ANY REPRODUCTION IN PART OR AS A WHOLE WITHOUT THE WRITTEN PERMISSION OF CRANE COMPANY IS PROHIBITED.

REMOVE ALL BURRS, DO NOT SCALE DRAWING, DRILL POINTS STD

BREAK CORNERS 0.005 - 0.010

UNLESS OTHERWISE SPECIFIED, DIMENSIONS ARE IN INCHES

TOLERANCES ARE:

.XXX + .005	ANGLES 1:21
.XX + .010	CENTRICITY 1:0.015
X + .060	MACHINE FINISH 63RMS

APPROVALS		DATE
CREATED	ZL	29/01/24
DRAWN	ZL	29/01/24
APPROVED	GT	30/01/24

EC NUMBER X

INITIAL USAGE (REF ONLY) X

CAD FILE NAME

<b>CRANE</b>	<b>HOKE</b>
SPARTANBURG, SOUTH CAROLINA 29303	
TITLE GENERAL ARRANGEMENT - 20mm BORE SINGLE ISOLATE BALL VALVE WITH 1" NPT FEMALE CONNECTION & HANDLE LOCKING.	
SIZE A3	PAGE CODE
SCALE N.T.S	XXXXX
DWG NO. A18819	REV B
SHEET 1 OF 1	