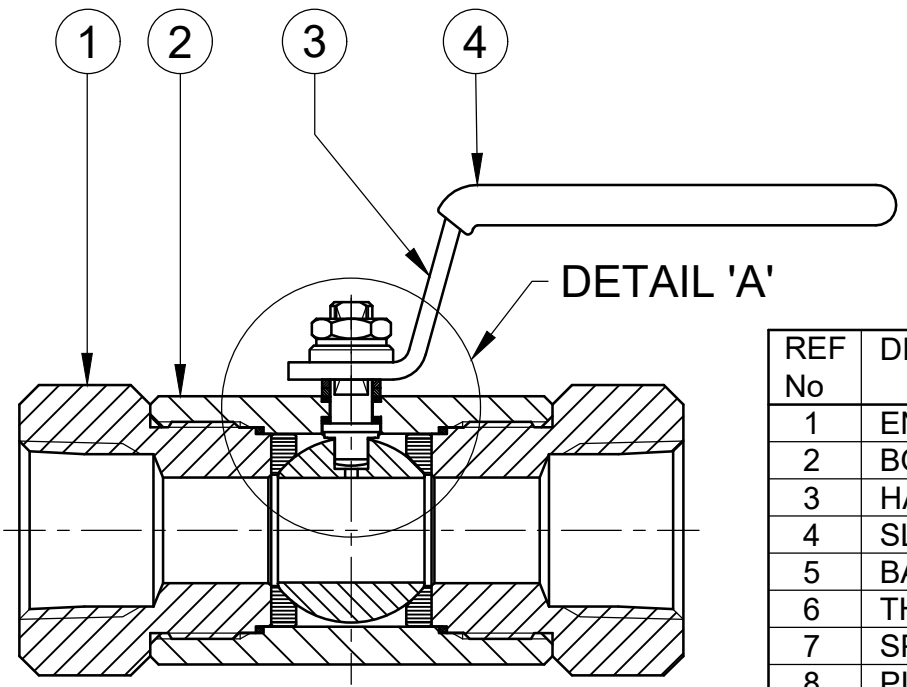
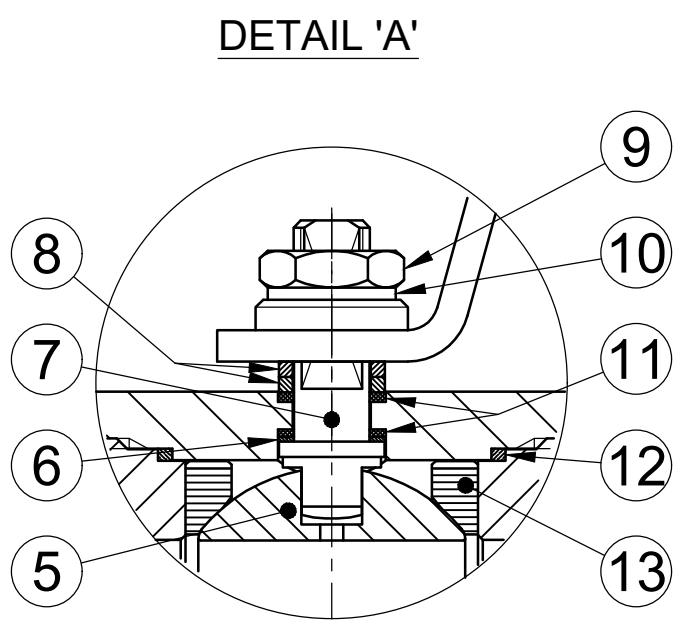
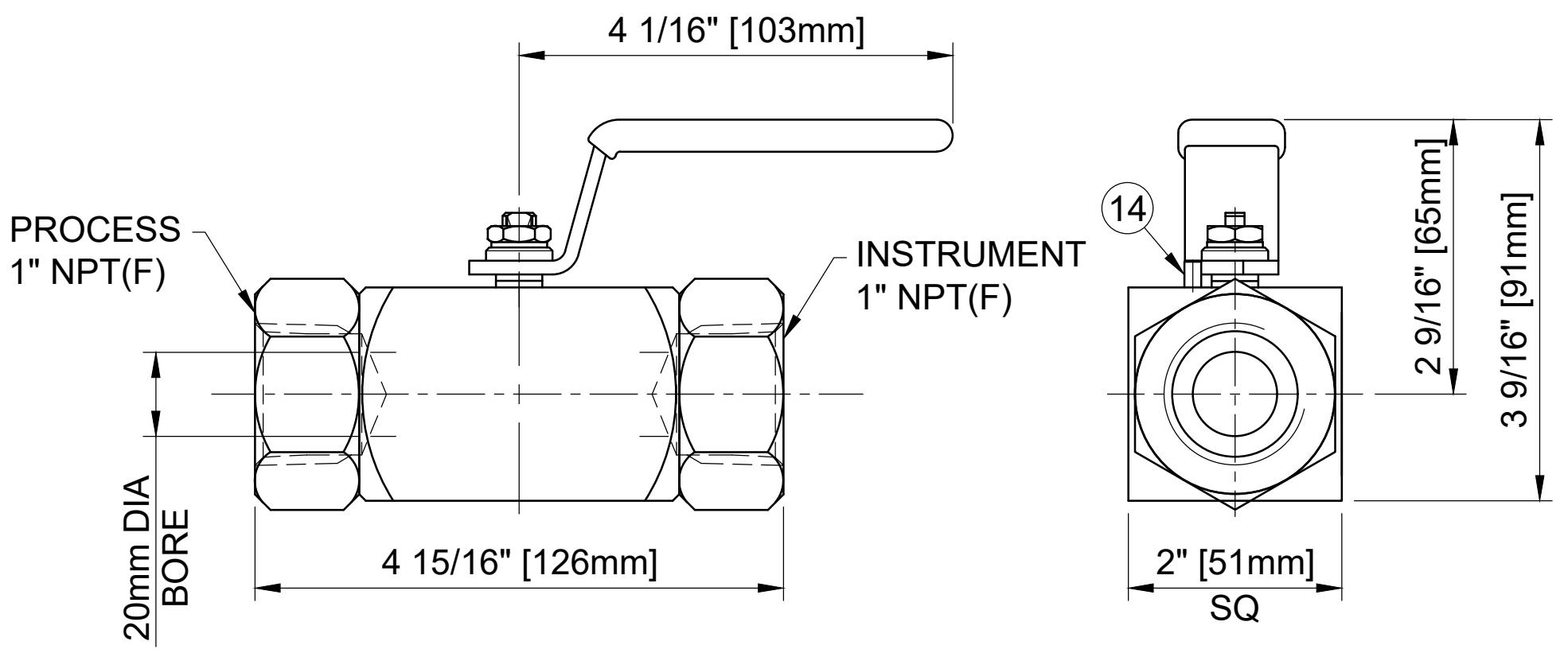


**MAXIMUM WORKING CONDITIONS**  
 COLD WORKING PRESSURE:  
 STANDARD, 6,000PSI (414BAR)  
 (AT REDUCED TEMPERATURE)

TEMPERATURE:  
 -29°C (-20.2°F) TO 200°C (392°F)  
 (AT REDUCED PRESSURE)

APPROX WEIGHT  
 1.9Kg



REF No	DESCRIPTION	MATERIAL
		STAINLESS
1	END CONNECTOR	ASTM A276 /A479 316
2	BODY	ASTM A276 /A479 316
3	HANDLE	316 SS
4	SLEEVE	PVC
5	BALL	ASTM A276 /A479 316
6	THRUST SEAL	25% GLASS FILLED PTFE
7	SPINDLE	ASTM A276 /A479 UNS S32760
8	PISTON RING	316 SS
9	NUT	A4 [316] SS
10	SERRATED WASHER	316 SS
11	SPINDLE SEALS	15% GLASS FILLED PTFE
12	BODY SEAL	100% VIRGIN PTFE
13	SEAT	PEEK
14	HANDLE STOP PIN	316 SS

**MARKING DETAILS**  
 (MARKING REFERENCE ONLY)



**REMARK**

- ADDITIONAL TAG PLATE FOR ADDITIONAL INFO UPON REQUESTED
- HCT HEAT CODE TRACEABILITY WILL BE MARKED ON BODY & END FITTINGS

THE INFORMATION CONTAINED IN THIS DRAWING IS THE PROPERTY OF CRANE COMPANY. ANY REPRODUCTION IN PART OR AS A WHOLE WITHOUT THE WRITTEN PERMISSION OF CRANE COMPANY IS PROHIBITED.

APPROVALS	DATE	<p>SPARTANBURG, SOUTH CAROLINA 29303</p>
CREATED JQ	10/10/23	
DRAWN JQ	10/10/23	
APPROVED ZL	11/10/23	
BREAK CORNERS 0.005 - 0.010	UNLESS OTHERWISE SPECIFIED, DIMENSIONS ARE IN INCHES	TITLE
		GENERAL ARRANGEMENT - 20mm BORE SINGLE ISOLATE BALL VALVE WITH 1" NPT FEMALE CONNECTIONS.
		SIZE
		A3
		SCALE
		N.T.S.
		DWG NO.
		A18638
		SHEET 1 OF 1