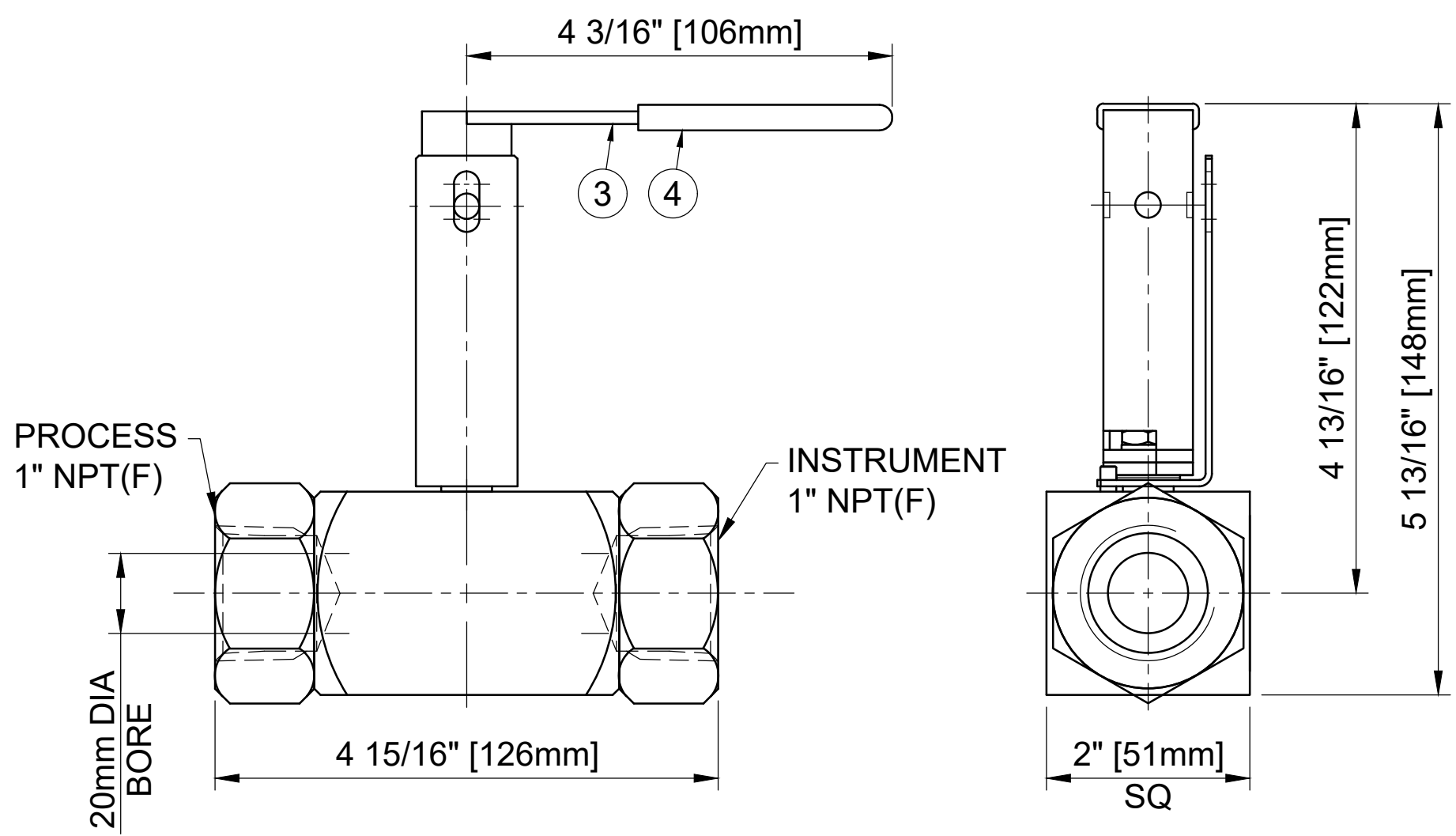


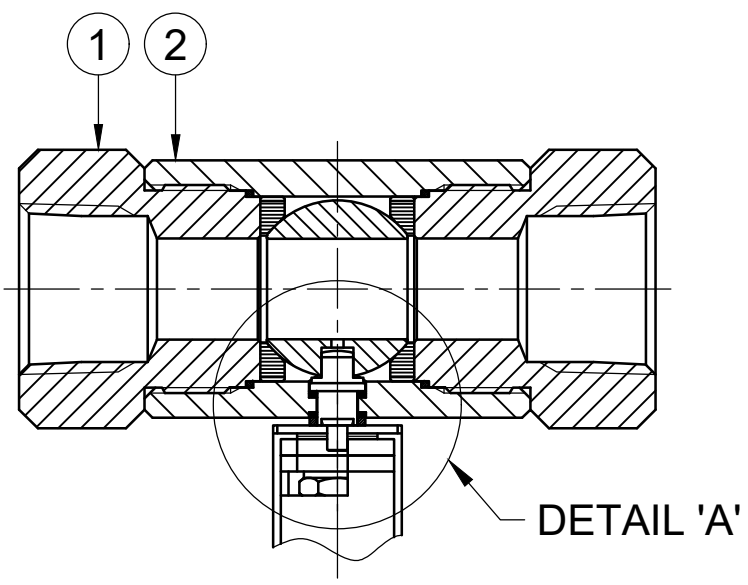
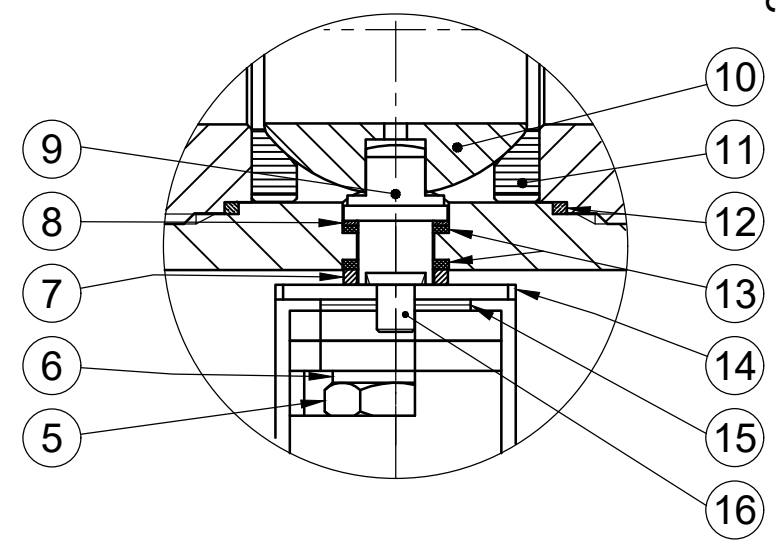
**MAXIMUM WORKING CONDITIONS**  
**COLD WORKING PRESSURE:**  
 STANDARD, 6,000PSI (414BAR)  
 (AT REDUCED TEMPERATURE)

**TEMPERATURE:**  
 -29°C (-20.2°F) TO 200°C (392°F)  
 (AT REDUCED PRESSURE)

APPROX WEIGHT  
 2.1Kg



DETAIL 'A'



DETAIL 'A'

REF No	DESCRIPTION	MATERIAL
		STAINLESS
1	END CONNECTOR	ASTM A276 /A479 316
2	BODY	ASTM A276 /A479 316
3	SLEEVE	PVC
4	HANDLE	316 SS
5	NUT	A4 [316] SS
6	SERRATED WASHER	316 SS
7	PISTON RING	316 SS
8	THRUST SEAL	25% GLASS FILLED PTFE
9	SPINDLE	ASTM A276 /A479 UNS S32760
10	BALL	ASTM A276 /A479 316
11	SEAT	PEEK
12	BODY SEAL	100% VIRGIN PTFE
13	SPINDLE SEAL	15% GLASS FILLED PTFE
14	LOCKING PLATE	316 SS
15	DISC SPRING	316 SS
16	HANDLE STOP PIN	316 SS

MARKING DETAILS  
 (MARKING REFERENCE ONLY)



REMARK

- ADDITIONAL TAG PLATE FOR ADDITIONAL INFO UPON REQUESTED
- HCT HEAT CODE TRACEABILITY WILL BE MARKED ON BODY & END FITTINGS

THE INFORMATION CONTAINED IN THIS DRAWING IS THE PROPERTY OF CRANE COMPANY. ANY REPRODUCTION IN PART OR AS A WHOLE WITHOUT THE WRITTEN PERMISSION OF CRANE COMPANY IS PROHIBITED.	APPROVALS	DATE	
	CREATED JQ	18/10/23	
REMOVE ALL BURRS, DO NOT SCALE DRAWING, DRILL POINTS STD	DRAWN JQ	18/10/23	SPARTANBURG, SOUTH CAROLINA 29303 TITLE GENERAL ARRANGEMENT - 20mm BORE SINGLE ISOLATE BALL VALVE WITH 1" NPT FEMALE CONNECTIONS WITH EXTENDED HANDLE LOCKING.
BREAK CORNERS 0.005 - 0.010	APPROVED ZL	19/10/23	
UNLESS OTHERWISE SPECIFIED, DIMENSIONS ARE IN INCHES TOLERANCES ARE: .XXX +.005 ANGLES +.41° .XX +.010 CONCENTRICITY ±.0015 .X +.060 MACHINE FINISH: 63RMS	EC NUMBER	X	SIZE A3 SCALE N.T.S. ECON NO XXXXX
	INITIAL USAGE (REF ONLY)	X	DWG NO. A18670 SHEET 1 OF 1
	CAD FILE NAME		