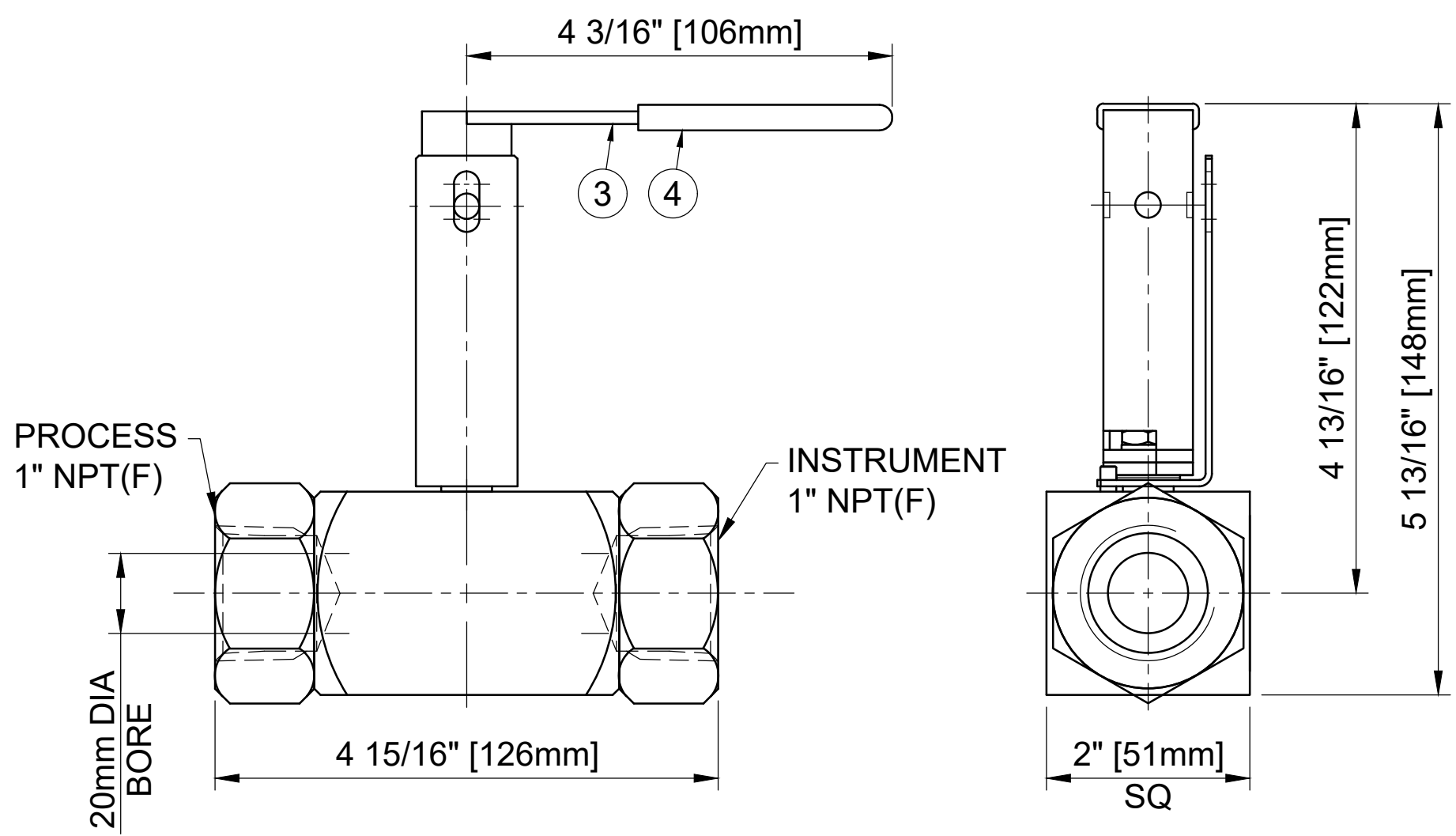


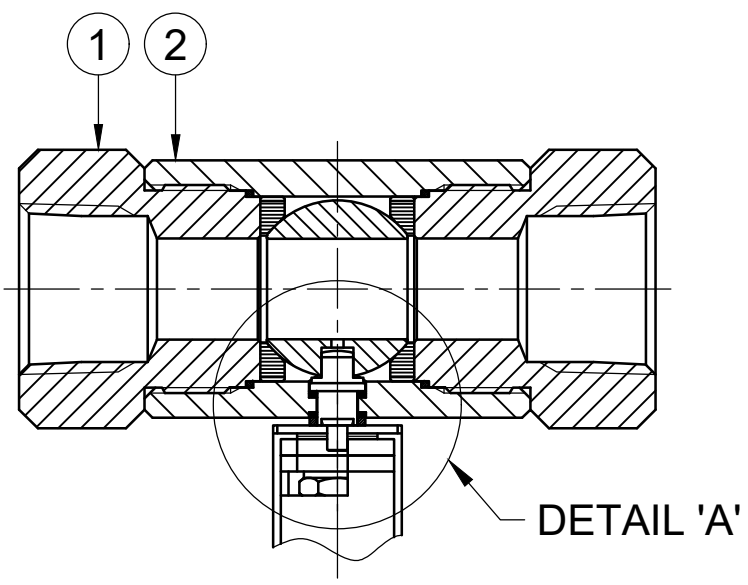
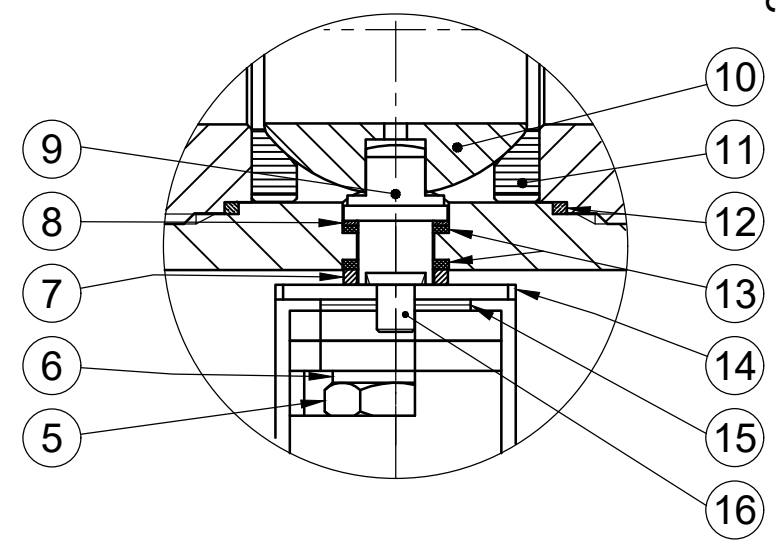
MAXIMUM WORKING CONDITIONS
 COLD WORKING PRESSURE:
 STANDARD, 6,000PSI (414BAR)
 (AT REDUCED TEMPERATURE)

TEMPERATURE:
 -29°C (-20.2°F) TO 200°C (392°F)
 (AT REDUCED PRESSURE)

APPROX WEIGHT
 2.1Kg



DETAIL 'A'



REF No	DESCRIPTION	MATERIAL
		STAINLESS
1	END CONNECTOR	ASTM A276 /A479 316
2	BODY	ASTM A276 /A479 316
3	SLEEVE	PVC
4	HANDLE	316 SS
5	NUT	A4 [316] SS
6	SERRATED WASHER	316 SS
7	PISTON RING	316 SS
8	THRUST SEAL	25% GLASS FILLED PTFE
9	SPINDLE	ASTM A276 /A479 UNS S32760
10	BALL	ASTM A276 /A479 316
11	SEAT	PEEK
12	BODY SEAL	100% VIRGIN PTFE
13	SPINDLE SEAL	15% GLASS FILLED PTFE
14	LOCKING PLATE	316 SS
15	DISC SPRING	316 SS
16	HANDLE STOP PIN	316 SS

MARKING DETAILS
 (MARKING REFERENCE ONLY)



REMARK

- ADDITIONAL TAG PLATE FOR ADDITIONAL INFO UPON REQUESTED
- HCT HEAT CODE TRACEABILITY WILL BE MARKED ON BODY & END FITTINGS

THE INFORMATION CONTAINED IN THIS DRAWING IS THE PROPERTY OF CRANE COMPANY. ANY REPRODUCTION IN PART OR AS A WHOLE WITHOUT THE WRITTEN PERMISSION OF CRANE COMPANY IS PROHIBITED.

APPROVALS: CREATED JQ 18/10/23, DRAWN JQ 18/10/23, APPROVED ZL 19/10/23

REMOVE ALL BURRS, DO NOT SCALE DRAWING, DRILL POINTS STD

BREAK CORNERS 0.005 - 0.010

UNLESS OTHERWISE SPECIFIED, DIMENSIONS ARE IN INCHES

TOLERANCES ARE:
 .XXX +.005 ANGLES ±.41°
 .XX +.010 CONCENTRICITY ±.0015
 .X +.060 MACHINE FINISH: 63RMS

APPROVALS: EC NUMBER X, INITIAL USAGE (REF ONLY) X, CAD FILE NAME

DATE: 18/10/23, 18/10/23, 19/10/23

CRANE | HOKE

SPARTANBURG, SOUTH CAROLINA 29303

TITLE: GENERAL ARRANGEMENT - 20mm BORE SINGLE ISOLATE BALL VALVE WITH 1" NPT FEMALE CONNECTIONS WITH EXTENDED HANDLE LOCKING.

SIZE: A3, SCALE: N.T.S., SHEET 1 OF 1