

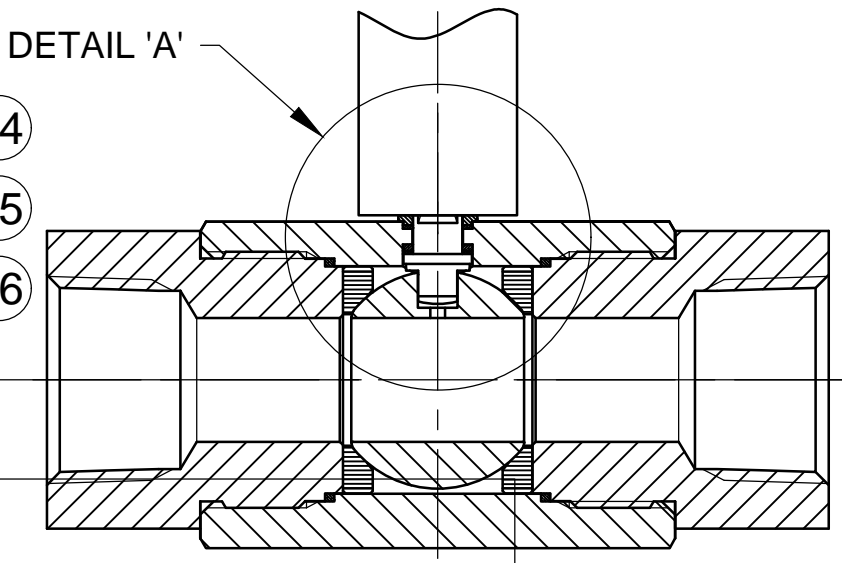
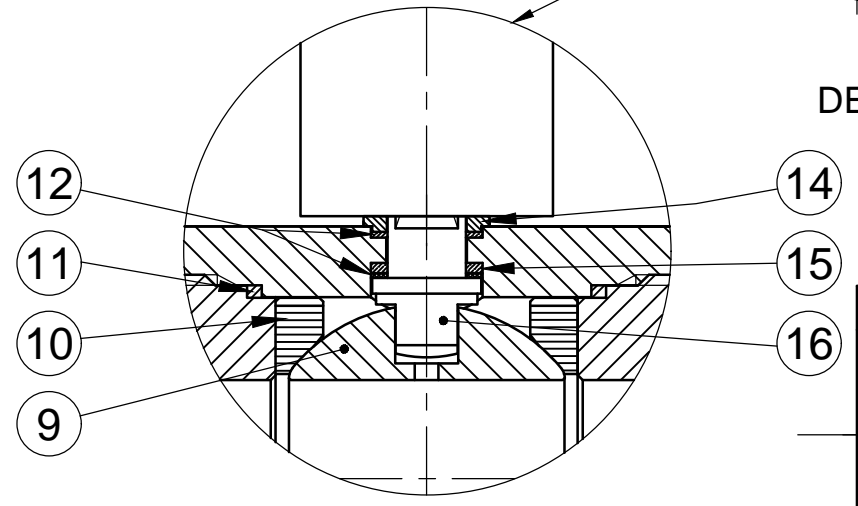
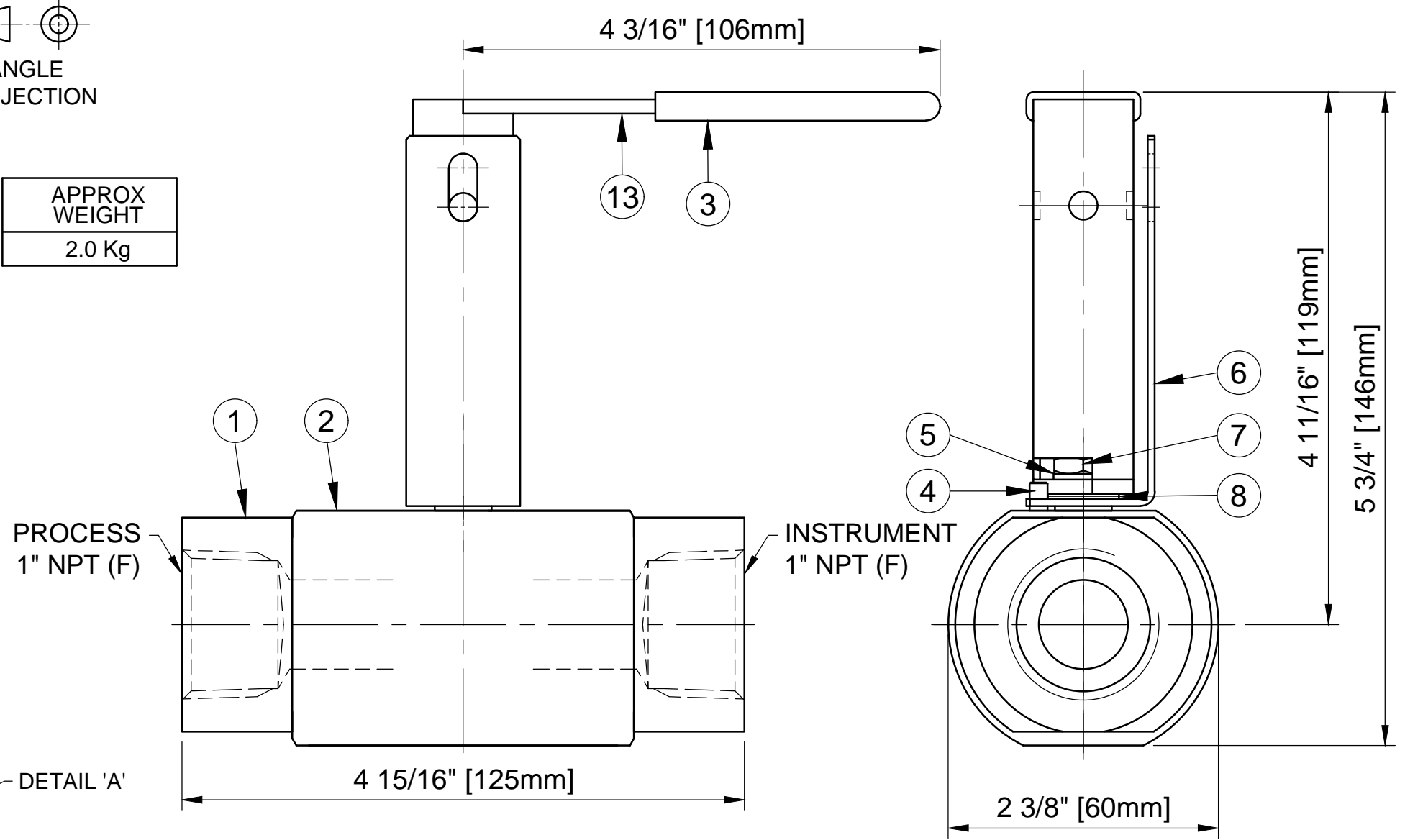
MAXIMUM WORKING CONDITIONS
 COLD WORKING PRESSURE:
 STANDARD, 6,000PSI (414BAR)
 (AT REDUCED TEMPERATURE)

TEMPERATURE:
 -29°C (-20.2°F) TO 200°C (392°F)
 (AT REDUCED PRESSURE)

FIRESAFE APPROVAL
 LLOYDS REGISTER TYPE
 APPROVAL IN ACCORDANCE WITH
 ONE OR MORE OF THE FOLLOWING
 RECOGNISED INTERNATIONAL
 STANDARDS:
 API607 / BS6755 PT 2 API6FA / ISO
 10497

NACE MR-01-75 (LATEST REVISION)
 ALL VALVES MEET NACE
 REQUIREMENTS

APPROX WEIGHT
 2.0 Kg



REF No	DESCRIPTION	MATERIAL
		STAINLESS
1	END CONNECTOR	ASTM A276 / A479 316
2	BODY	ASTM A276 / A479 316
3	SLEEVE	PVC
4	HANDLE STOP PIN	316 SS
5	SERRATED WASHER	316 SS
6	LOCKING PLATE	316 SS
7	NUT	A4 [316] SS
8	DISC SPRING	316 SS
9	BALL	ASTM A276 / A479 316
10	SEAT	PEEK
11	BODY SEAL	GRAPHITE
12	SPINDLE SEALS	GRAPHITE
13	HANDLE	316 SS
14	PISTON RING	316 SS
15	THRUST SEAL	PEEK
16	SPINDLE	ASTM A276 / A479 UNS S32760

MARKING DETAILS
 (MARKING REFERENCE ONLY)



6000 PSI UNS 31603
 TYPE 7L23F16Y-EH50-
 PK-FS

REMARK

- ADDITIONAL TAG PLATE FOR ADDITIONAL INFO UPON REQUESTED
- HCT HEAT CODE TRACEABILITY WILL BE MARKED ON BODY & END FITTINGS

THE INFORMATION CONTAINED IN THIS DRAWING IS THE PROPERTY OF CRANE COMPANY. ANY REPRODUCTION IN PART OR AS A WHOLE WITHOUT THE WRITTEN PERMISSION OF CRANE COMPANY IS PROHIBITED.

APPROVALS	DATE	<p>SPARTANBURG, SOUTH CAROLINA 29303</p>
CREATED AJ	22/09/23	
DRAWN AJ	22/09/23	
APPROVED SSH	22/09/23	
REMOVE ALL BURRS, DO NOT SCALE DRAWING, DRILL POINTS STD	UNLESS OTHERWISE SPECIFIED, DIMENSIONS ARE IN INCHES	TITLE
BREAK CORNERS 0.005 - 0.010	TOLERANCES ARE:	GENERAL ARRANGEMENT - 20mm BORE SINGLE ISOLATE BALL VALVE WITH 1" NPT FEMALE CONNECTIONS WITH EXTENDED HANDLES.
	.XXX +.005	SIZE
	.XX +.010	SCALE
	X +.060	N.T.S.
	ANGLES ±1°	CONCENTRICITY ±0.005
	MACHINE FINISH: 63RMS	EC NUMBER X
		INITIAL USAGE (REF ONLY) X
		CAD FILE NAME
		DWG NO. A18608
		SHEET 1 OF 1