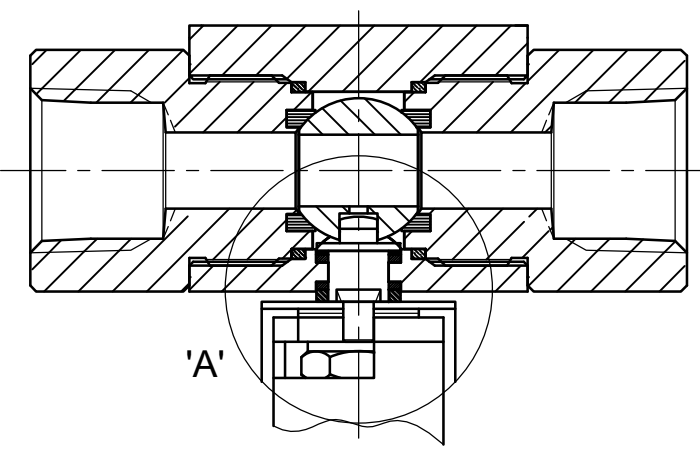
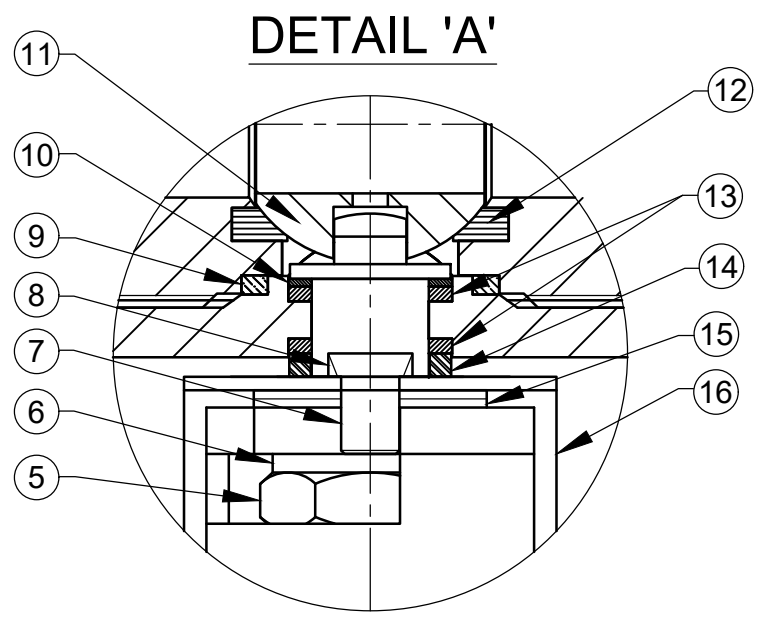
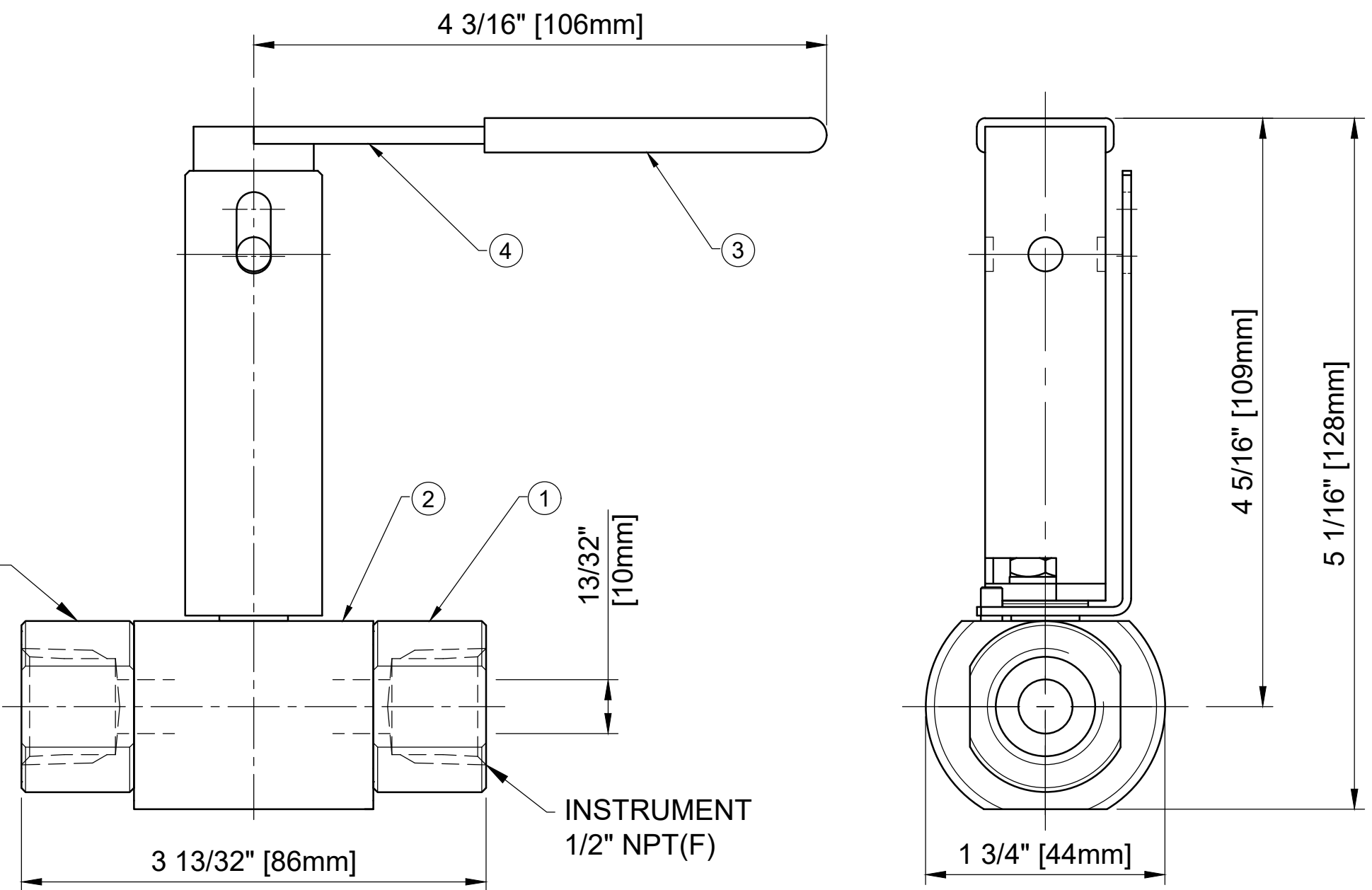


MAXIMUM WORKING CONDITIONS
 COLD WORKING PRESSURE:
 STANDARD, 6,000PSI (414BAR)
 (AT REDUCED TEMPERATURE)

TEMPERATURE:
 -29°C (-20.2°F) TO 200°C (392°F)
 (AT REDUCED PRESSURE)

NACE MR-01-75 (LATEST REVISION)
 ALL VALVES MEET NACE REQUIREMENTS

APPROX WEIGHT
 1.0 Kg



REF No	DESCRIPTION	MATERIAL
		6MO
1	END CONNECTOR	UNS S31254 6MO
2	BODY	UNS S31254 6MO
3	SLEEVE	PVC
4	HANDLE	316 SS
5	NUT	A4 [316] SS
6	SERRATED WASHER	316 SS
7	HANDLE STOP PIN	316 SS
8	SPINDLE	ASTM B446 N06625
9	BODY SEAL	PTFE
10	THRUST SEAL	25% GRAPHITE FILLED PTFE
11	BALL	UNS S31254 6MO
12	SEAT	PEEK
13	SPINDLE SEALS	15% GLASS FILLED PTFE
14	PISTON RING	316 SS
15	DISC SPRINGS	316 SS
16	LOCK PLATE	316 SS

MARKING DETAILS
 (MARKING REFERENCE ONLY)

HOKE

6000 PSI UNS S31254
 TYPE 7L23F86MOAO-
 EH50-LT-PK

REMARK

- ADDITIONAL TAG PLATE FOR ADDITIONAL INFO UPON REQUESTED
- HCT HEAT CODE TRACEABILITY WILL BE MARKED ON BODY & END FITTINGS

THE INFORMATION CONTAINED IN THIS DRAWING IS THE PROPERTY OF CRANE COMPANY. ANY REPRODUCTION IN PART OR AS A WHOLE WITHOUT THE WRITTEN PERMISSION OF CRANE COMPANY IS PROHIBITED.

REMOVE ALL BURRS, DO NOT SCALE DRAWING, DRILL POINTS STD

BREAK CORNERS 0.005 - 0.010

UNLESS OTHERWISE SPECIFIED, DIMENSIONS ARE IN INCHES

TOLERANCES ARE:
 .XXX +.005
 .XX +.010
 .X +.060

ANGLES ±41°
 CONCENTRICITY ±0.0015
 MACHINE FINISH: 63RMS

APPROVALS		DATE
CREATED	JS	21/09/23
DRAWN	JS	21/09/23
APPROVED	SSH	22/09/23

EC NUMBER X

INITIAL USAGE (REF ONLY) X

CAD FILE NAME

CRANE **HOKE**

SPARTANBURG, SOUTH CAROLINA 29303

TITLE: GENERAL ARRANGEMENT - 10mm BORE SINGLE ISOLATE BALL VALVE WITH 1/2" NPT FEMALE CONNECTIONS WITH EXTENDED HANDLES.

SIZE: N.T.S. PAGE CODE: XXXXX DWG NO: A18607 REV: B

SCALE: N.T.S. SHEET 1 OF 1