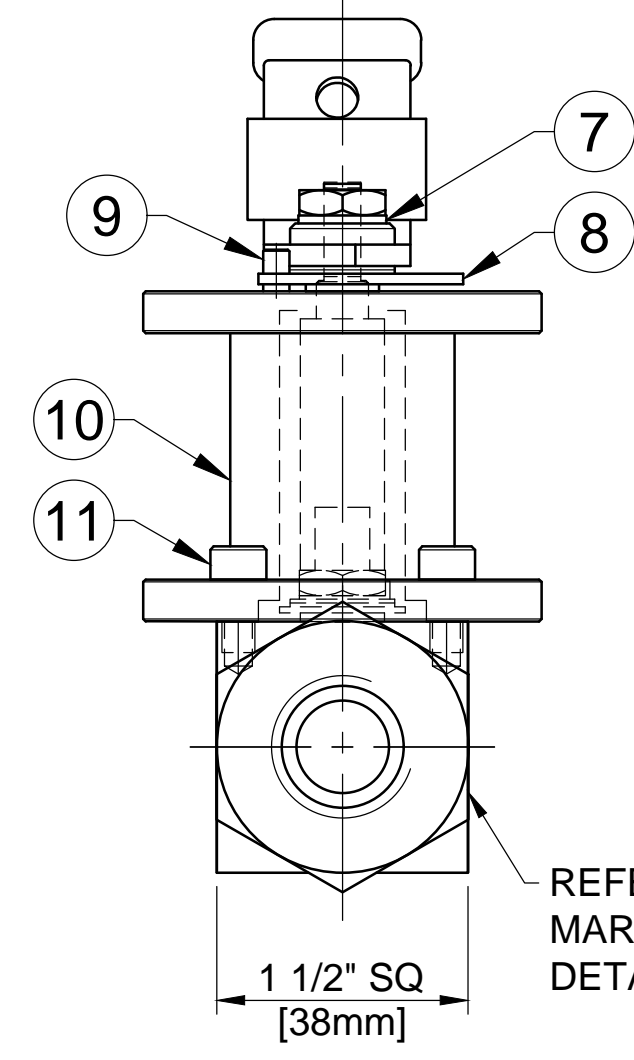
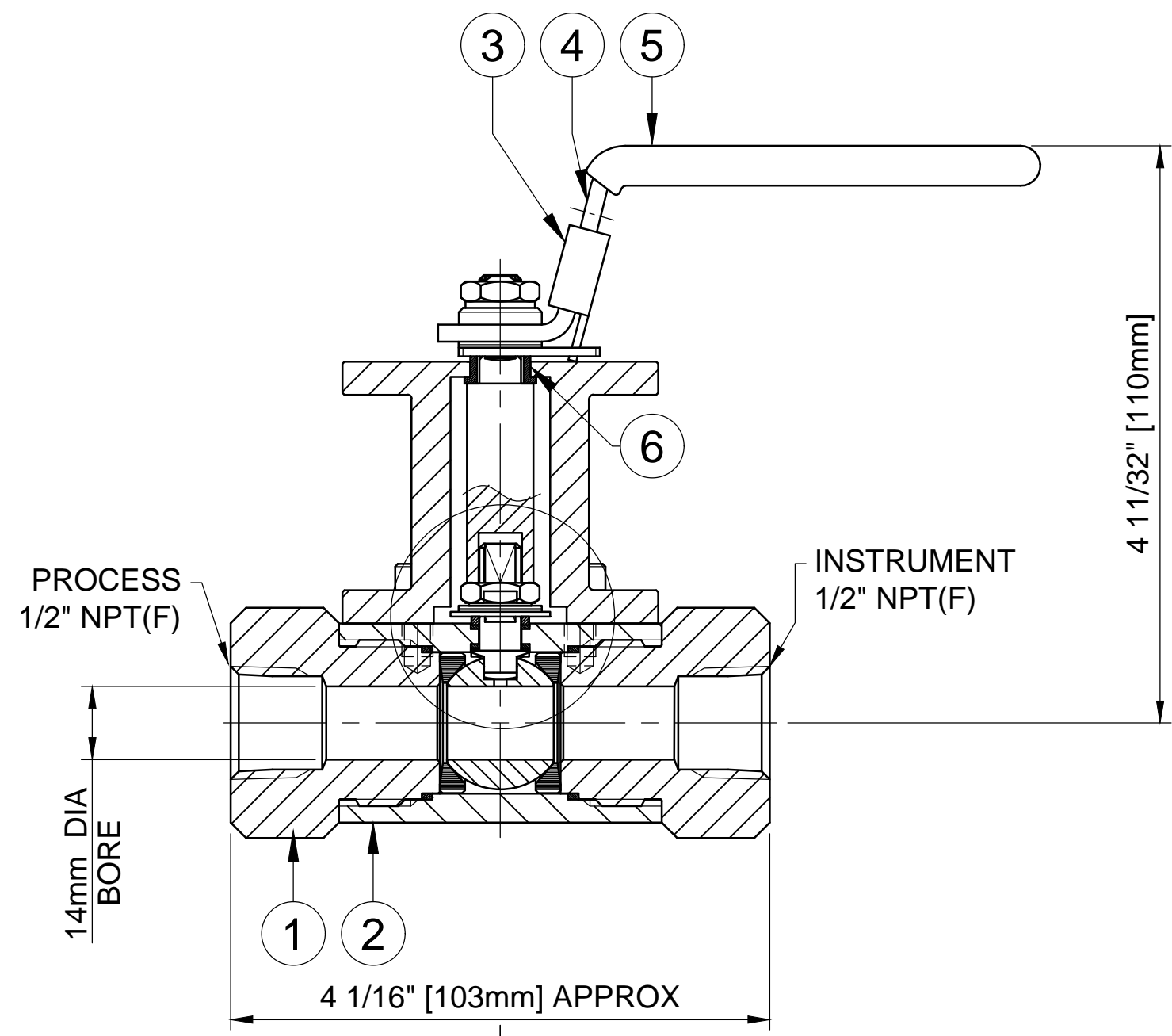


MAXIMUM WORKING CONDITIONS
 COLD WORKING PRESSURE:
 STANDARD, 6,000PSI (414BAR)
 (AT REDUCED TEMPERATURE)

TEMPERATURE:
 -29°C (-20.2°F) TO 200°C (392°F)
 (AT REDUCED PRESSURE)

NACE MR-01-75 (LATEST REVISION)
 ALL VALVES MEET NACE REQUIREMENTS

APPROX WEIGHT
 1.8 Kg



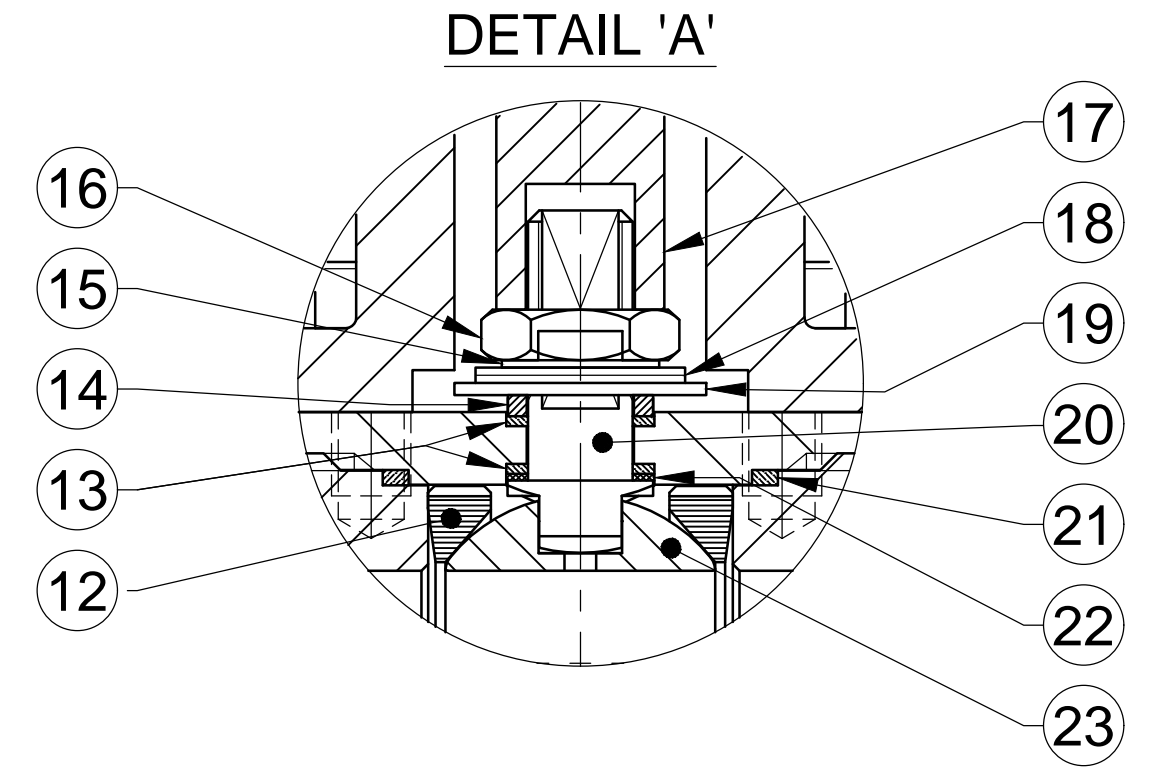
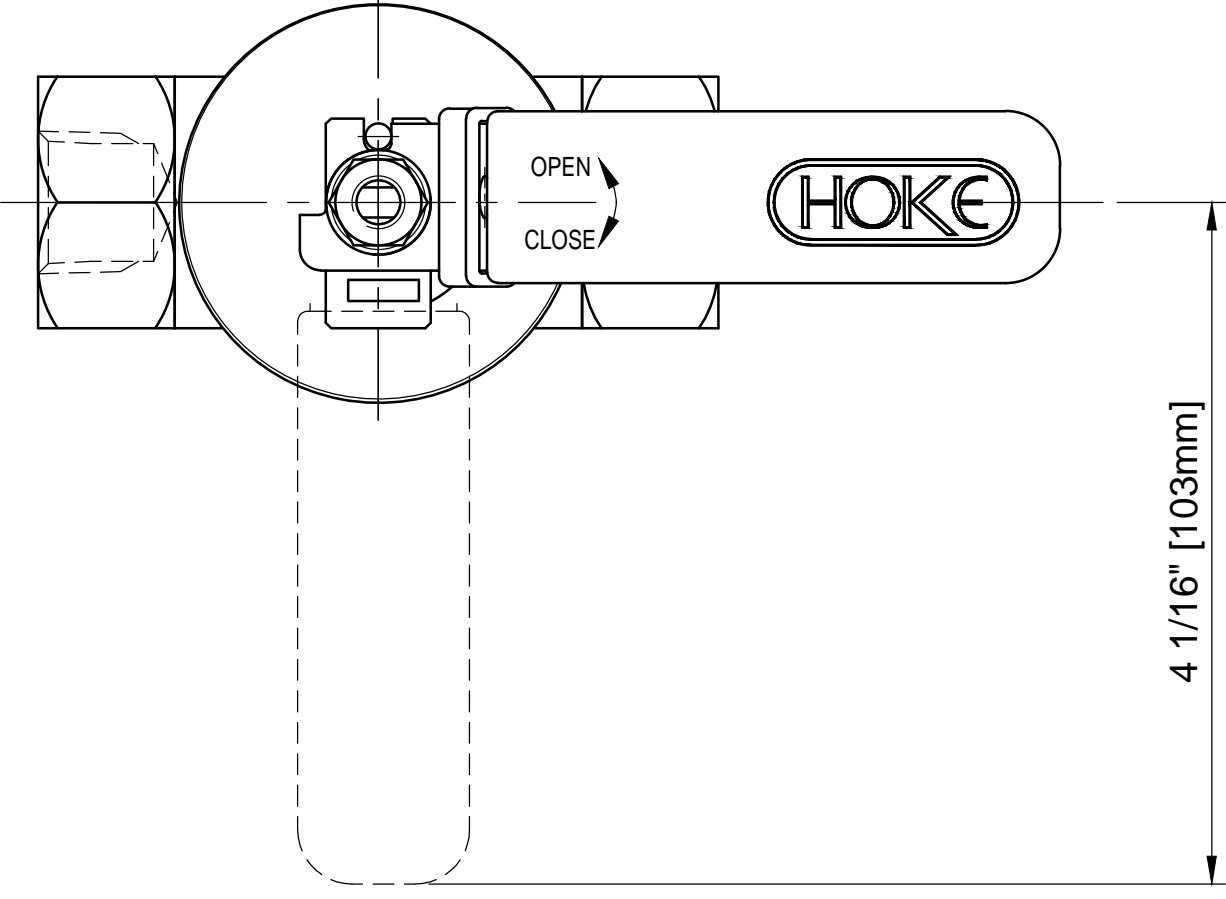
MARKING DETAILS
 (MARKING REFERENCE ONLY)

6000 PSI UNS S31254
 TYPE 7L23F86MOAO
 -XH50-LT-PK

REMARK

- ADDITIONAL TAG PLATE FOR ADDITIONAL INFO UPON REQUESTED
- HCT HEAT CODE TRACEABILITY WILL BE MARKED ON BODY & END FITTINGS

REF No	DESCRIPTION	MATERIAL
		6MO
1	END CONNECTOR	ASTM A276 / A479 UNS S31254
2	BODY	ASTM A276 / A479 UNS S31254
3	LOCKING TAB	316 SS
4	HANDLE	316 SS
5	SLEEVE	PVC
6	EXTENSION BUSH	TBA
7	SERRATED WASHER	316 SS
8	LOCKING PLATE	316 SS
9	HANDLE STOP PIN	316 SS
10	EXTENSION CAP	316 SS
11	CAP SCREW	316 SS
12	SEAT	PEEK
13	SPINDLE SEALS	15% GLASS FILLED PTFE
14	PISTON RING	316 SS
15	LOCK TAB	316 SS
16	NUT	A4 [316] SS
17	EXTENSION SPINDLE	ASTM B446 UNS N06625
18	DISC SPRING	316 SS
19	ANTI TORQUE PLATE	316 SS
20	SPINDLE	ASTM B446 UNS N06625
21	BODY SEAL	100% VIRGIN PTFE
22	SPINDLE SEAL	25% GLASS FILLED PTFE
23	BALL	ASTM A276 / A479 UNS S31254



**HANDLE IS PRESSURE SENSITIVE PART
 DO NOT STEP OR CARRY BY THE HANDLE**

THE INFORMATION CONTAINED IN THIS DRAWING IS THE PROPERTY OF CRANE COMPANY. ANY REPRODUCTION IN PART OR AS A WHOLE WITHOUT THE WRITTEN PERMISSION OF CRANE COMPANY IS PROHIBITED.		APPROVALS		DATE	
REMOVE ALL BURRS, DO NOT SCALE DRAWING, DRILL POINTS STD		CREATED	ZL	09/08/2023	
BREAK CORNERS 0.005 - 0.010		DRAWN	ZL	09/08/2023	SPARTANBURG, SOUTH CAROLINA 29303 TITLE 14mm BORE SINGLE ISOLATE BALL VALVE WITH NPT CONNECTIONS WITH EXTENDED HANDLE CAP
UNLESS OTHERWISE SPECIFIED, DIMENSIONS ARE IN INCHES		APPROVED	AJ	09/08/2023	
TOLERANCES ARE:		EC NUMBER	X		SIZE C SCALE N.T.S.
.XXX ± .005 .XX ± .010 .X ± .060		INITIAL USAGE (REF ONLY)	X		
ANGLES ± 1° CONCENTRICITY ± 0.015 MACHINE FINISH: 63RMS		CAD FILE NAME			DWG NO. A18557 SHEET 1 OF 1