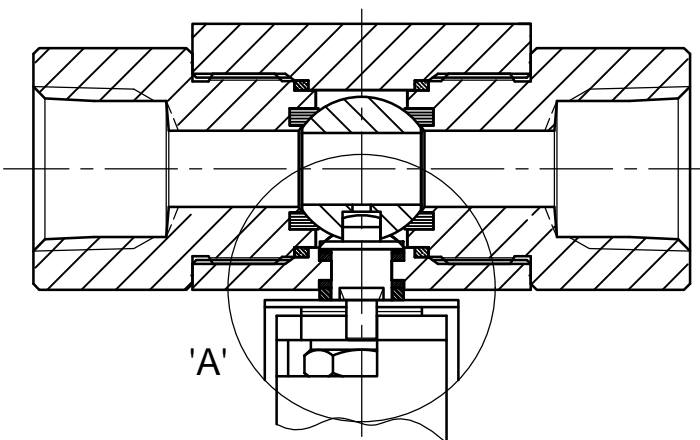
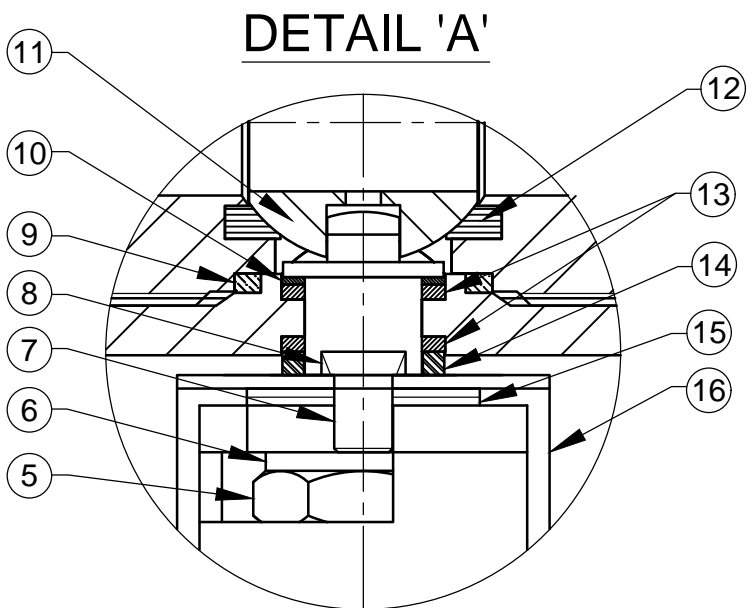
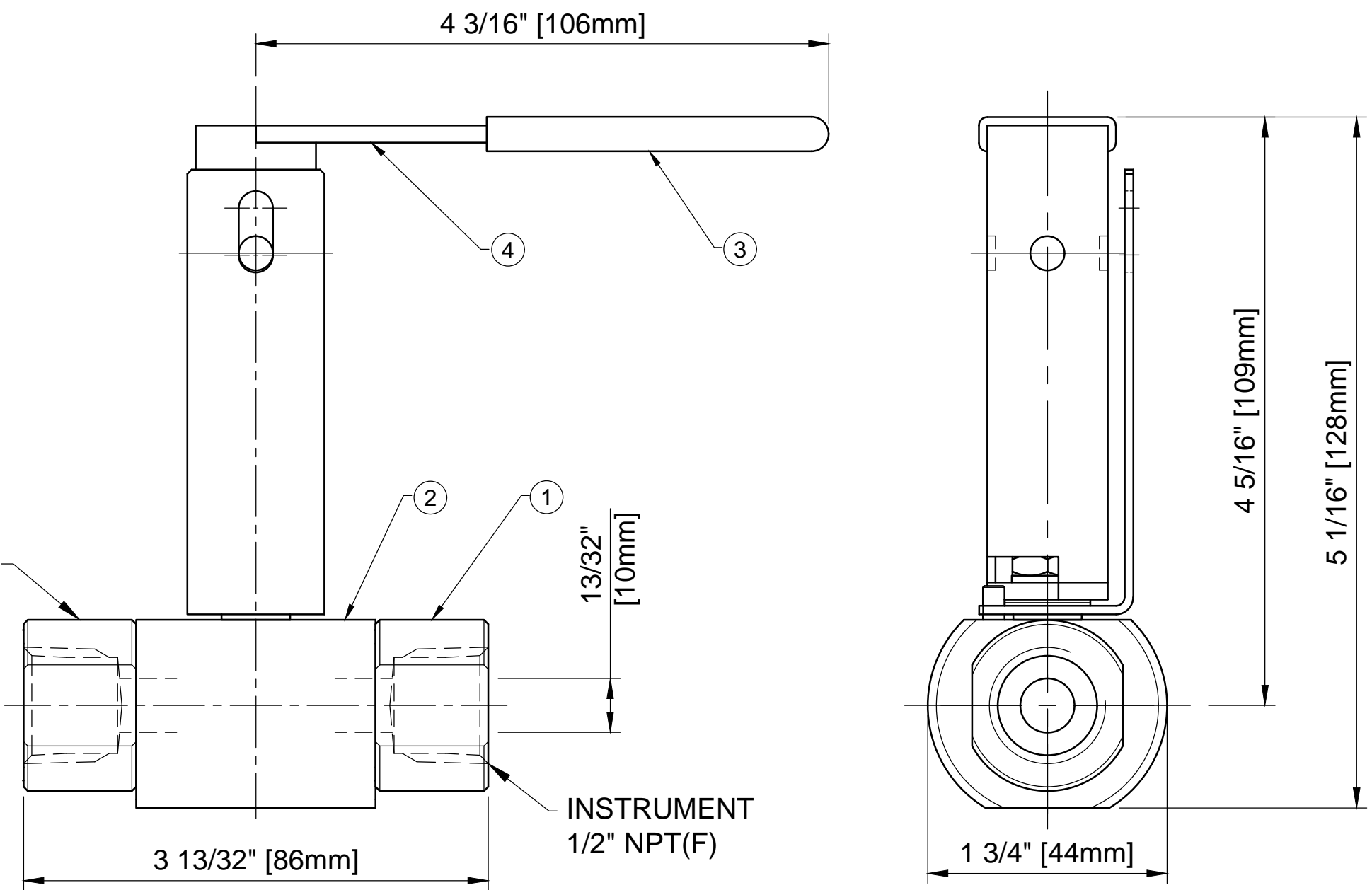


MAXIMUM WORKING CONDITIONS
 COLD WORKING PRESSURE:
 STANDARD, 6,000PSI (414BAR)
 (AT REDUCED TEMPERATURE)

TEMPERATURE:
 -29°C (-20.2°F) TO 200°C (392°F)
 (AT REDUCED PRESSURE)

NACE MR-01-75 (LATEST REVISION)
 ALL VALVES MEET NACE REQUIREMENTS

APPROX WEIGHT
 1.0 Kg



REF No	DESCRIPTION	MATERIAL
		TITANIUM
1	END CONNECTOR	ASTM B348 GRADE 5 TI
2	BODY	ASTM B348 GRADE 5 TI
3	SLEEVE	PVC
4	HANDLE	316 SS
5	NUT	A4 [316] SS
6	SERRATED WASHER	316 SS
7	HANDLE STOP PIN	316 SS
8	SPINDLE	ASTM B348 GRADE 5 TI
9	BODY SEAL	PTFE
10	THRUST SEAL	25% GLASS FILLED PTFE
11	BALL	ASTM B348 GRADE 5 TI
12	SEAT	MODIFIED PEEK
13	SPINDLE SEALS	15% GLASS FILLED PTFE
14	PISTON RING	316 SS
15	DISC SPRINGS	316 SS
16	LOCK PLATE	316 SS

MARKING DETAILS
 (MARKING REFERENCE ONLY)



REMARK

- ADDITIONAL TAG PLATE FOR ADDITIONAL INFO UPON REQUESTED
- HCT HEAT CODE TRACEABILITY WILL BE MARKED ON BODY & END FITTINGS

THE INFORMATION CONTAINED IN THIS DRAWING IS THE PROPERTY OF CRANE COMPANY. ANY REPRODUCTION IN PART OR AS A WHOLE WITHOUT THE WRITTEN PERMISSION OF CRANE COMPANY IS PROHIBITED.

REMOVE ALL BURRS, DO NOT SCALE DRAWING, DRILL POINTS STD

BREAK CORNERS 0.005 - 0.010

UNLESS OTHERWISE SPECIFIED, DIMENSIONS ARE IN INCHES

TOLERANCES ARE:
 .XXX +.005 ANGLES ±.1°
 .XX +.010 CONCENTRICITY ±.0015
 X +.060 MACHINE FINISH: 63RMS

APPROVALS		DATE
CREATED	JS	21/09/23
DRAWN	JS	21/09/23
APPROVED	SSH	22/09/23

EC NUMBER X

INITIAL USAGE (REF ONLY) X

CAD FILE NAME

CRANE **HOKE**

SPARTANBURG, SOUTH CAROLINA 29303

TITLE: GENERAL ARRANGEMENT - 10mm BORE SINGLE ISOLATE BALL VALVE WITH 1/2" NPT FEMALE CONNECTIONS WITH EXTENDED HANDLES.

SCALE: N.T.S. XXXXX

DWG NO. A18609

SHEET 1 OF 1