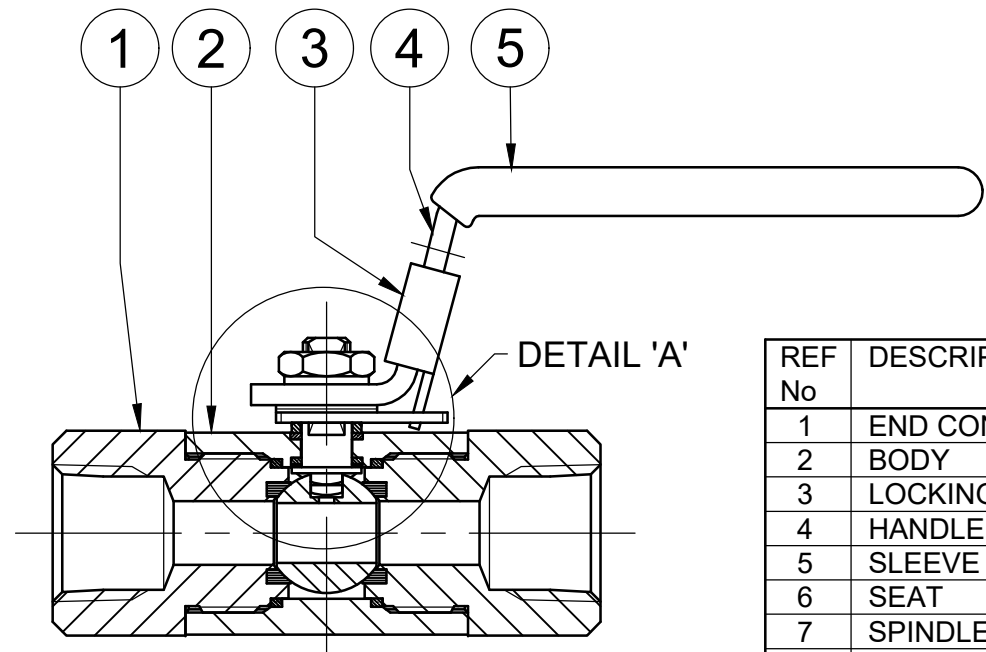
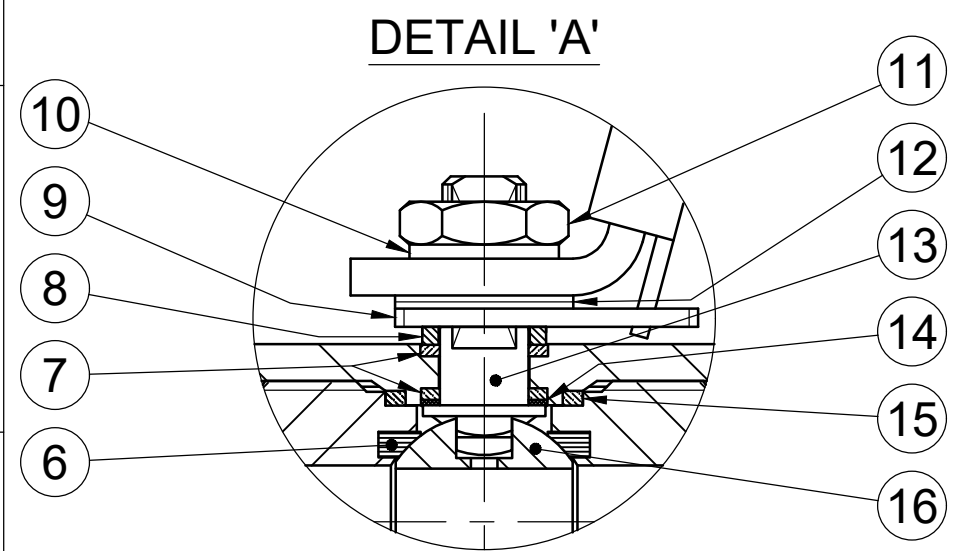
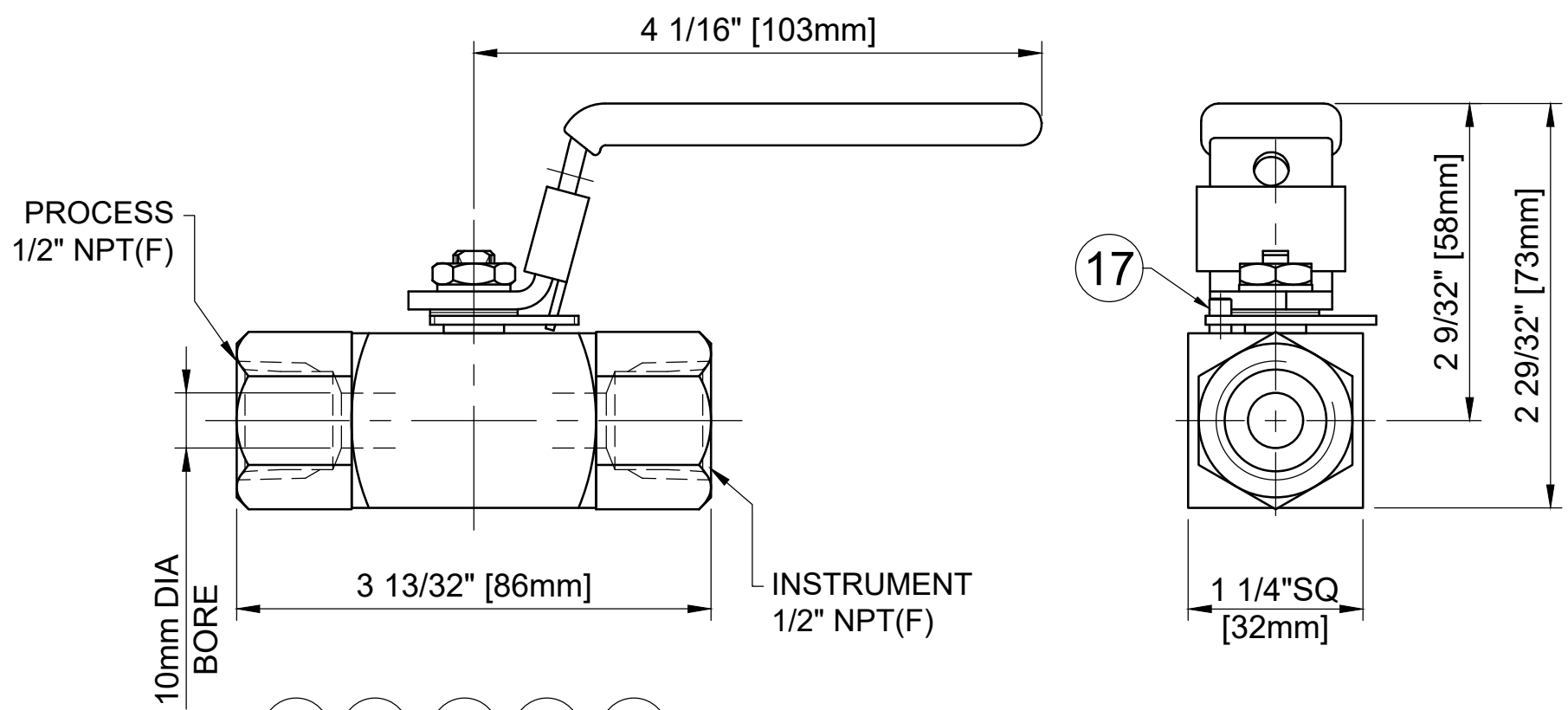


**MAXIMUM WORKING CONDITIONS**  
 COLD WORKING PRESSURE:  
 STANDARD, 6,000PSI (414BAR)  
 (AT REDUCED TEMPERATURE)

TEMPERATURE:  
 -29°C (-20.2°F) TO 200°C (392°F)  
 (AT REDUCED PRESSURE)

APPROX WEIGHT  
 0.6Kg



REF No	DESCRIPTION	MATERIAL
		STAINLESS
1	END CONNECTOR	ASTM A276 /A479 316
2	BODY	ASTM A276 /A479 316
3	LOCKING TAB	316 SS
4	HANDLE	316 SS
5	SLEEVE	PVC
6	SEAT	MODIFIED PEEK
7	SPINDLE SEALS	15% GLASS FILLED PTFE
8	PISTON RING	316 SS
9	LOCKING PLATE	316 SS
10	SERRATED WASHER	316 SS
11	NUT	A4 [316] SS
12	DISC SPRINGS	316 SS
13	SPINDLE	ASTM A276 /A479 316
14	THRUST SEAL	25% GLASS FILLED PTFE
15	END CONNECTOR SEAL	100% VIRGIN PTFE
16	BALL	ASTM A276 /A479 316
17	STOP PIN	316 SS

**MARKING DETAILS**  
 (MARKING REFERENCE ONLY)



**REMARK**

- ADDITIONAL TAG PLATE FOR ADDITIONAL INFO UPON REQUESTED
- HCT HEAT CODE TRACEABILITY WILL BE MARKED ON BODY & END FITTINGS

THE INFORMATION CONTAINED IN THIS DRAWING IS THE PROPERTY OF CRANE COMPANY. ANY REPRODUCTION IN PART OR AS A WHOLE WITHOUT THE WRITTEN PERMISSION OF CRANE COMPANY IS PROHIBITED.

APPROVALS	DATE	
CREATED ZL	16/10/23	
DRAWN ZL	16/10/23	SPARTANBURG, SOUTH CAROLINA 29303 TITLE GENERAL ARRANGEMENT - 10mm BORE SINGLE ISOLATE BALL VALVE WITH 1/2" NPT FEMALE CONNECTIONS & HANDLE LOCKING
APPROVED JQ	17/10/23	
BREAK CORNERS 0.005 - 0.010	UNLESS OTHERWISE SPECIFIED, DIMENSIONS ARE IN INCHES	EC NUMBER X INITIAL USAGE (REF ONLY) X CAD FILE NAME
TOLERANCES ARE: .XXX +.005 ANGLES ±.1° .XX +.010 CONCENTRICITY ±0.015 .X +.060 MACHINE FINISH: 63RMS		SCALE N.T.S. SHEET 1 OF 1