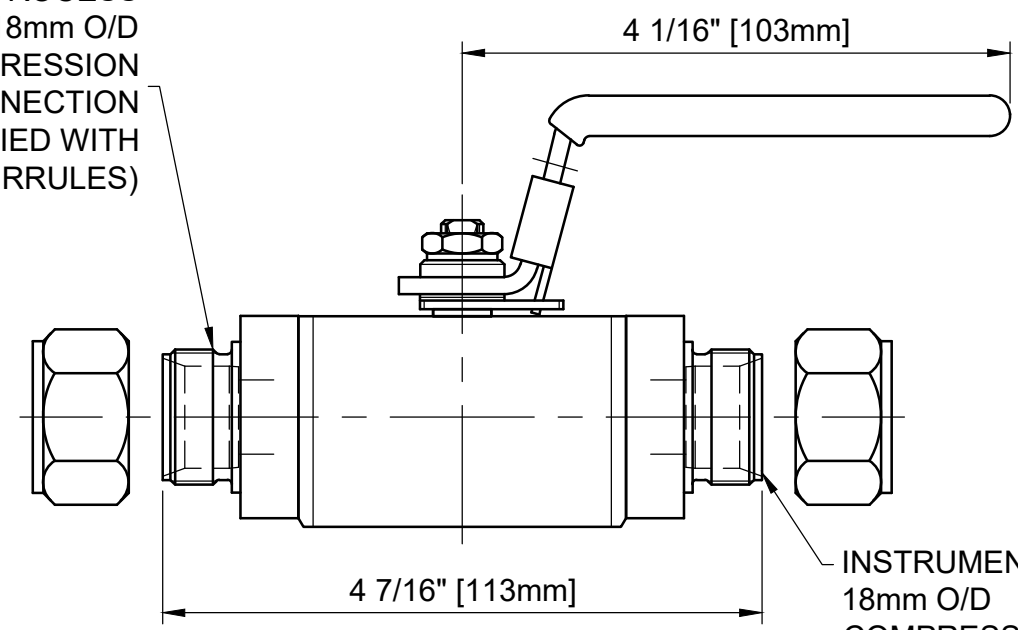


MAXIMUM WORKING CONDITIONS
COLD WORKING PRESSURE:
 STANDARD, 6,000PSI (414BAR)
 (AT REDUCED TEMPERATURE)

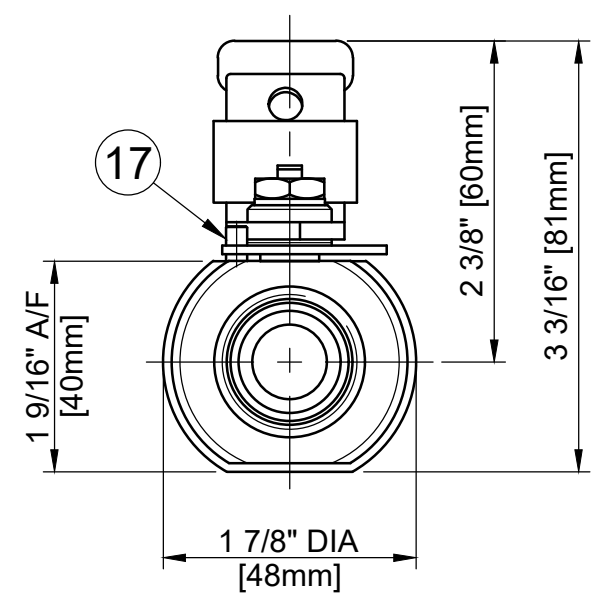
TEMPERATURE:
 -29°C (-20.2°F) TO 200°C (392°F)
 (AT REDUCED PRESSURE)

APPROX WEIGHT
 1.2Kg

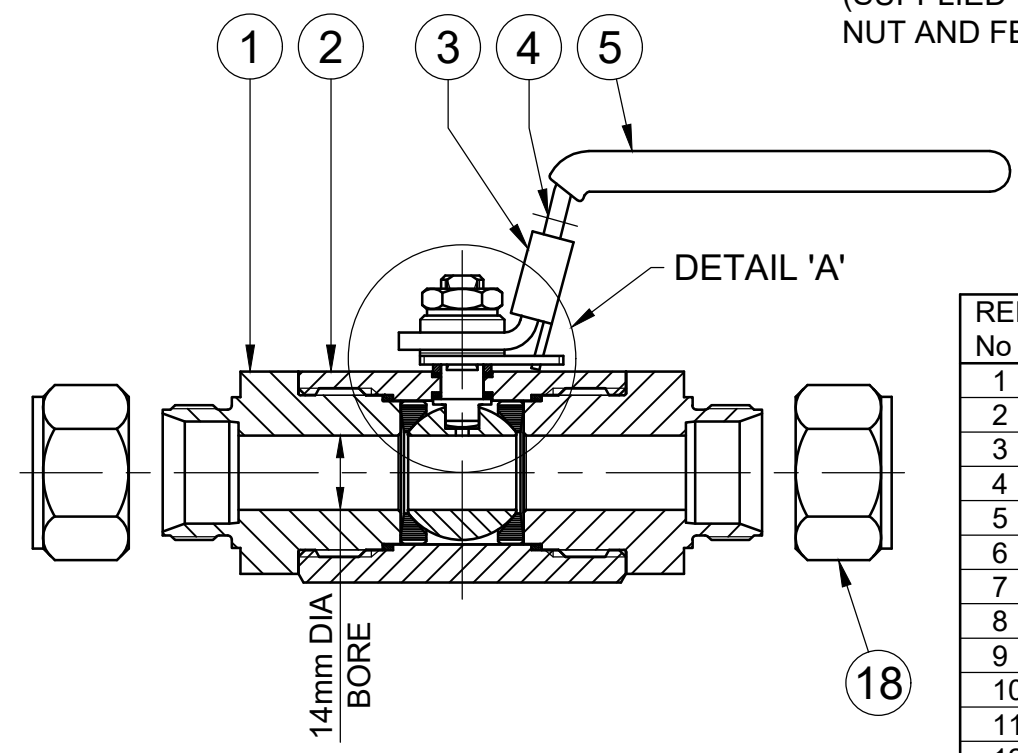
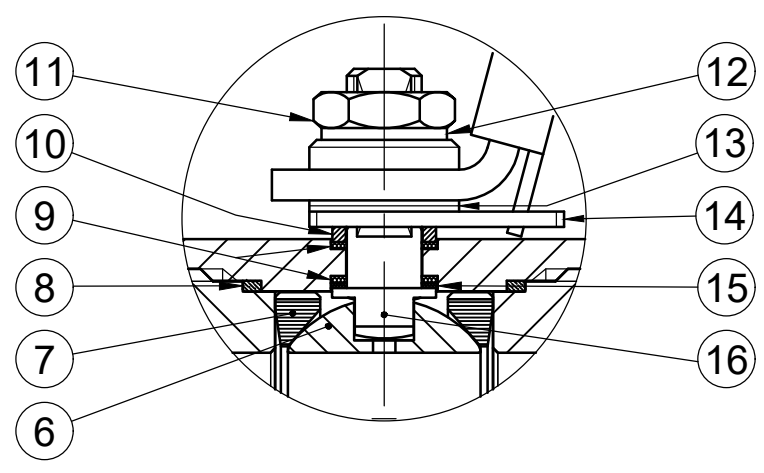
PROCESS
 18mm O/D
 COMPRESSION
 END CONNECTION
 (SUPPLIED WITH
 NUT AND FERRULES)



INSTRUMENT
 18mm O/D
 COMPRESSION
 END CONNECTION
 (SUPPLIED WITH
 NUT AND FERRULES)



DETAIL 'A'



REF No	DESCRIPTION	MATERIAL
		6MO
1	END CONNECTOR	ASTM A276/A479 UNS S31254
2	BODY	ASTM A276/A479 UNS S31254
3	LOCK TAB	316 SS
4	HANDLE	316 SS
5	SLEEVE	PVC
6	BALL	ASTM A276/A479 UNS S31254
7	SEAT	PEEK
8	END CONNECTOR SEAL	100% VIRGIN PTFE
9	SPINDLE SEALS	15% GLASS FILLED PTFE
10	PISTON RING	316 SS
11	NUT	A4 [316] SS
12	SERRATED WASHER	316 SS
13	DISC SPRING	316 SS
14	LOCKING PLATE	316 SS
15	THRUST SEAL	25% GLASS FILLED PTFE
16	SPINDLE	ASTM B446 UNS N06625
17	HANDLE STOP PIN	316 SS
18	NUT AND FERRULES	ASTM A276/A479 UNS S31254

MARKING DETAILS
 (MARKING REFERENCE ONLY)



REMARK

- ADDITIONAL TAG PLATE FOR ADDITIONAL INFO UPON REQUESTED
- HCT HEAT CODE TRACEABILITY WILL BE MARKED ON BODY & END FITTINGS

THE INFORMATION CONTAINED IN THIS DRAWING IS THE PROPERTY OF CRANE COMPANY. ANY REPRODUCTION IN PART OR AS A WHOLE WITHOUT THE WRITTEN PERMISSION OF CRANE COMPANY IS PROHIBITED.	APPROVALS	DATE	SPARTANBURG, SOUTH CAROLINA 29303
	CREATED JQ	19/10/23	
REMOVE ALL BURRS, DO NOT SCALE DRAWING, DRILL POINTS STD	DRAWN JQ	19/10/23	TITLE GENERAL ARRANGEMENT - 14mm BORE SINGLE ISOLATE BALL VALVE WITH COMPRESSION ENDS
BREAK CORNERS 0.005 - 0.010	APPROVED ZL	19/10/23	
TOLERANCES ARE: .XXX +.005 ANGLES ±.1° .XX +.010 CONCENTRICITY ±.0015 .X +.060 MACHINE FINISH: 63RMS	EC NUMBER	X	SIZE A3 SCALE N.T.S.
	UNLESS OTHERWISE SPECIFIED, DIMENSIONS ARE IN INCHES	INITIAL USAGE (REF ONLY)	X
	CAD FILE NAME		REV C