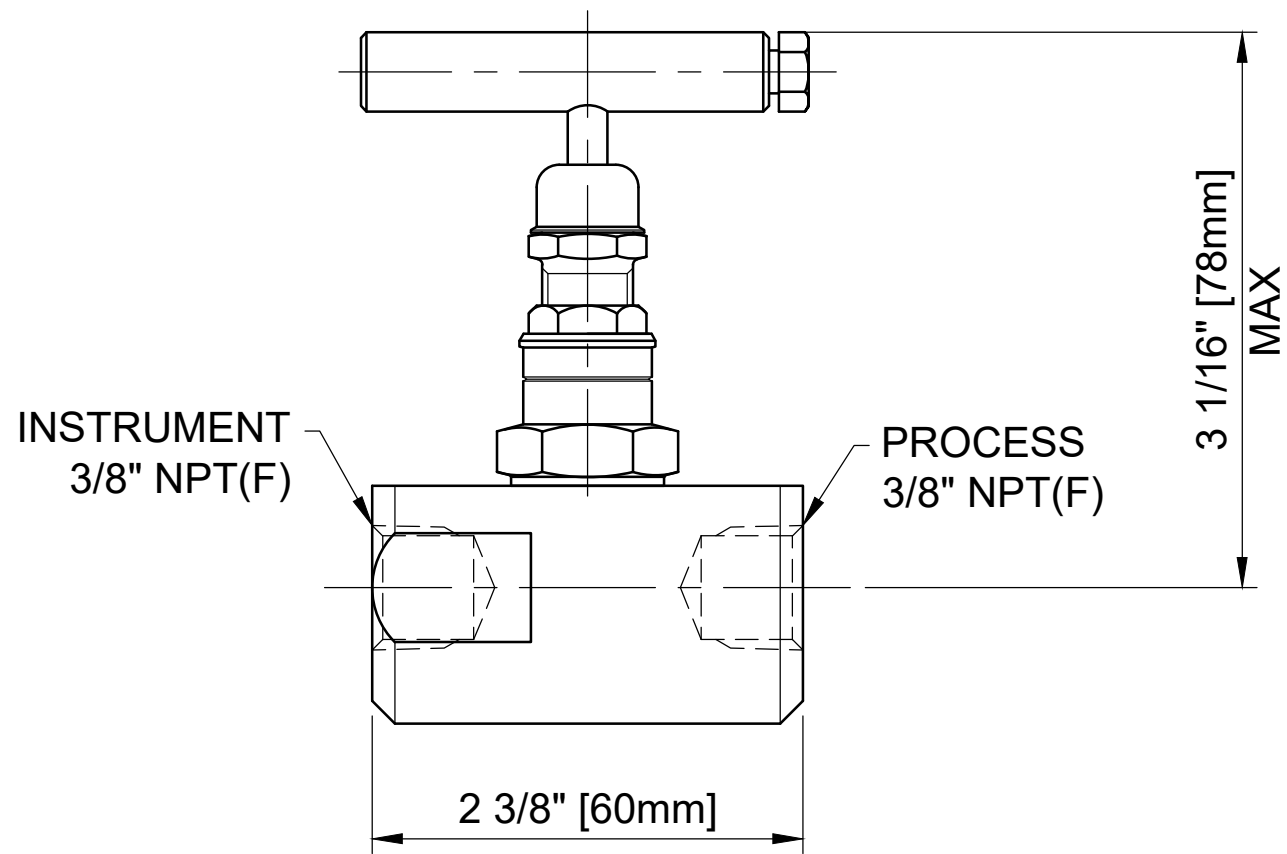
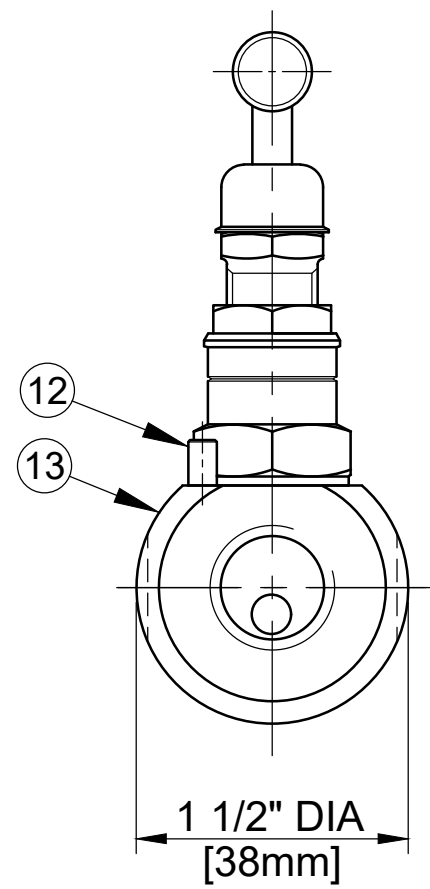


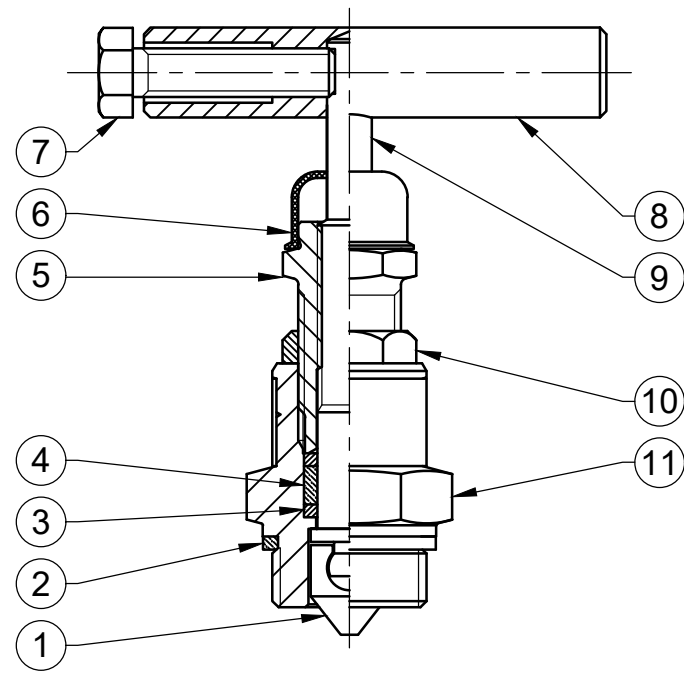
MAXIMUM WORKING CONDITIONS
COLD WORKING PRESSURE:
 STANDARD, 6,000PSI (414BAR)
 (AT REDUCED TEMPERATURE)

TEMPERATURE:
 TITANIUM, GRAPHITE PACKING
 -29°C (-20.2°F) TO 315°C (599°F)
 (AT REDUCED PRESSURE)

APPROX WEIGHT
 0.4Kg



HEADUNIT DETAIL



REF No	DESCRIPTION	MATERIAL
		TITANIUM
1	TIP	ASTM B348 GR5
2	BODY SEAL	GRAPHITE
3	PISTON RING	ASTM B348 GR5
4	SEAL BUSH	GRAPHITE
5	PUSHER	316 SS
6	DUST CAP	LOTREX 2300
7	SCREW	A4 [316] SS
8	TEE BAR	316 SS
9	SPINDLE	ASTM B348 GR5
10	LOCKNUT	316 SS
11	SEAL HOUSING	ASTM B348 GR5
12	LOCK PIN	316 SS
13	BODY	ASTM B348 GR5

MARKING DETAILS
 (MARKING REFERENCE ONLY)



REMARK

- ADDITIONAL TAG PLATE FOR ADDITIONAL INFO UPON REQUESTED
- HCT HEAT CODE TRACEABILITY WILL BE MARKED ON BODY & END FITTINGS

THE INFORMATION CONTAINED IN THIS DRAWING IS THE PROPERTY OF CRANE COMPANY. ANY REPRODUCTION IN PART OR AS A WHOLE WITHOUT THE WRITTEN PERMISSION OF CRANE COMPANY IS PROHIBITED.	APPROVALS		DATE	SPARTANBURG, SOUTH CAROLINA 29303
	CREATED	ZL	12/10/2023	
REMOVE ALL BURRS, DO NOT SCALE DRAWING, DRILL POINTS STD	DRAWN	ZL	12/10/2023	TITLE GENERAL ARRANGEMENT TYPE F38 ROUND SINGLE ISOLATE NEEDLE VALVE FEMALE x FEMALE CONNECTIONS
BREAK CORNERS 0.005 - 0.010	APPROVED	JQ	17/10/2023	
TOLERANCES ARE: .XXX +.005 ANGLE 1:21 .XX +.010 CONCENTRICITY 1:0.015 X +.060 MACHINE FINISH 63RMS	EC NUMBER	X		SIZE A3
	INITIAL USAGE (REF ONLY)	X		DWG NO. A18685
	CAD FILE NAME	SCALE	N.T.S	SHEET 1 OF 1 REV C