

MAXIMUM WORKING CONDITIONS
COLD WORKING PRESSURE:
 STANDARD, 6,000PSI (414BAR)
 (AT REDUCED TEMPERATURE)
TEMPERATURE:
 -29°C (-20.2°F) TO 240°C (464°F)
 (AT REDUCED PRESSURE)

APPROX WEIGHT
 2.4Kg

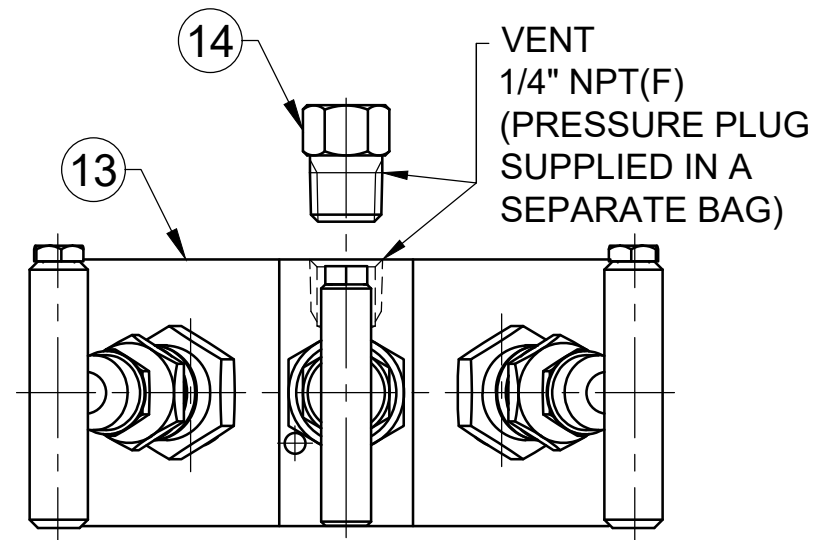
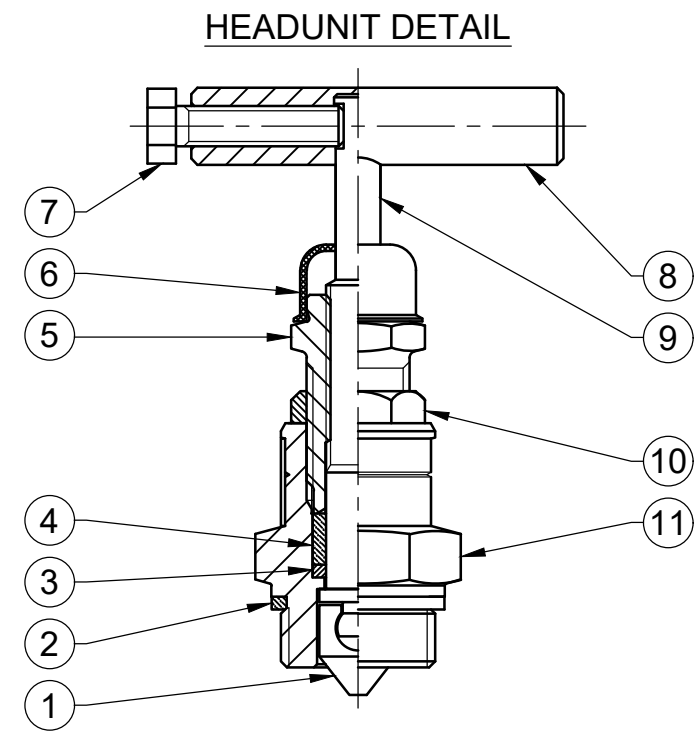
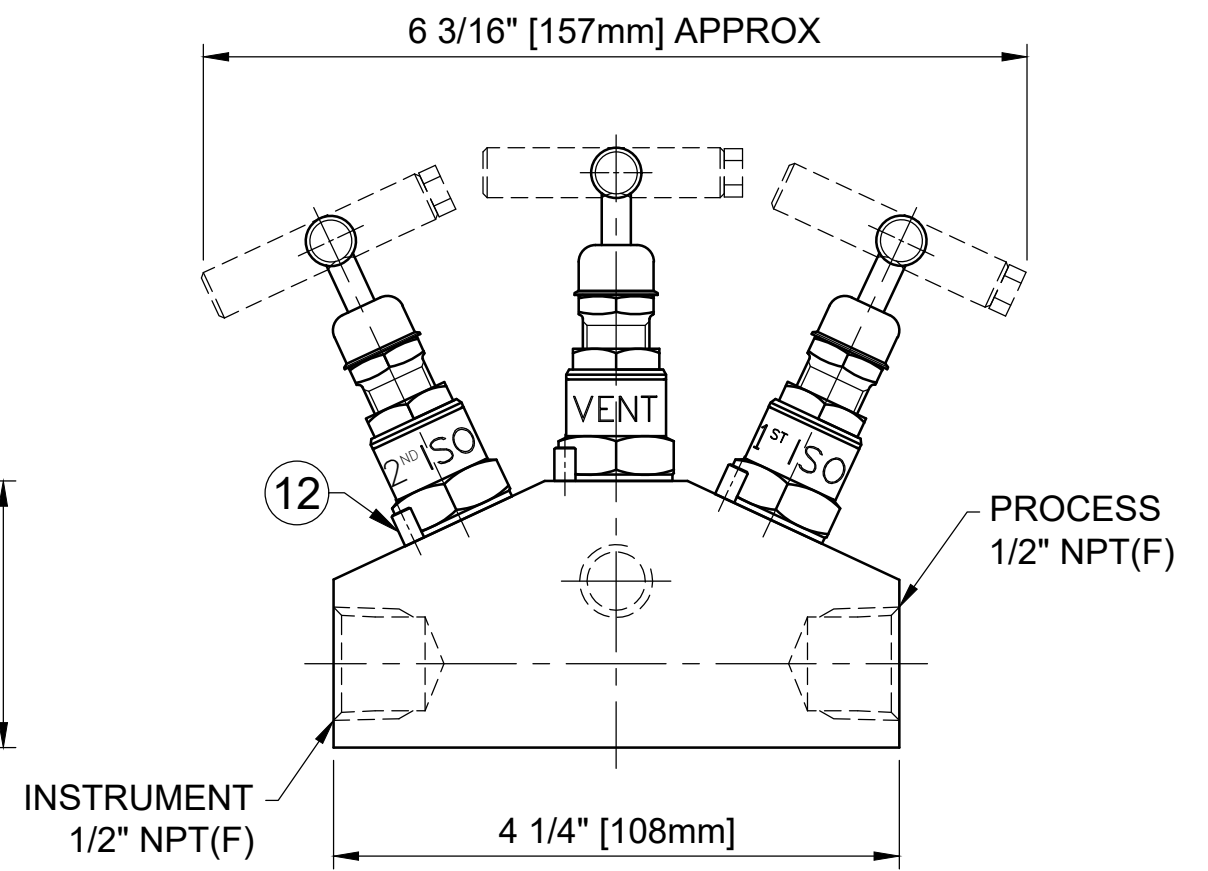
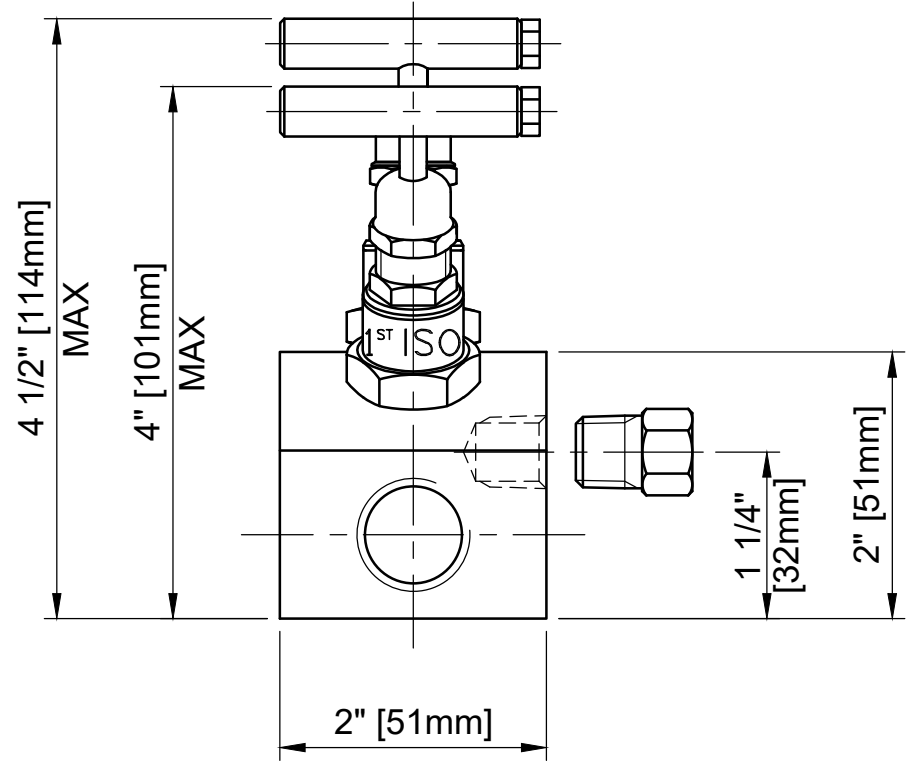
REF No	DESCRIPTION	MATERIAL
		STAINLESS
1	TIP	ASTM A276 /A479 316
2	BODY SEAL	100% VIRGIN PTFE
3	PISTON RING	316 SS
4	SEAL BUSH	100% VIRGIN PTFE
5	PUSHER	316 SS
6	DUST CAP	LOTREX 2300
7	SCREW	A4 [316] SS
8	TEE BAR	316 SS
9	SPINDLE	ASTM A276 /A479 316
10	LOCKNUT	316 SS
11	SEAL HOUSING	ASTM A276 /A479 316
12	LOCK PIN	316 SS
13	BODY	ASTM A276 /A479 316
14	PRESSURE PLUG	ASTM A276 /A479 316

MARKING DETAILS
 (MARKING REFERENCE ONLY)



REMARK

- ADDITIONAL TAG PLATE FOR ADDITIONAL INFO UPON REQUESTED
- HCT HEAT CODE TRACEABILITY WILL BE MARKED ON BODY & END FITTINGS



THE INFORMATION CONTAINED IN THIS DRAWING IS THE PROPERTY OF CRANE COMPANY. ANY REPRODUCTION IN PART OR AS A WHOLE WITHOUT THE WRITTEN PERMISSION OF CRANE COMPANY IS PROHIBITED. REMOVE ALL BURRS, DO NOT SCALE DRAWING, DRILL POINTS STD BREAK CORNERS 0.005 - 0.010 UNLESS OTHERWISE SPECIFIED, DIMENSIONS ARE IN INCHES TOLERANCES ARE: .XXX +.005 .XX +.010 X +.060 ANGLES 1:21 CONCENTRICITY 1:0.015 MACHINE FINISH 6.3RMS	APPROVALS CREATED ZL 06/02/2024 DRAWN ZL 06/02/2024 APPROVED GT 06/02/2024 EC NUMBER X INITIAL USAGE (REF ONLY) X CAD FILE NAME	DATE 06/02/2024 06/02/2024 06/02/2024	CRANE HOKE SPARTANBURG, SOUTH CAROLINA 29303 TITLE GENERAL ARRANGEMENT 'INPM' TYPE DOUBLE BLOCK & BLEED NEEDLE VALVE MANIFOLD SIZE A31 SCALE N.T.S. DWG NO. A18833 SHEET 1 OF 1
	EC NUMBER X INITIAL USAGE (REF ONLY) X CAD FILE NAME	DATE 06/02/2024 06/02/2024 06/02/2024	CRANE HOKE SPARTANBURG, SOUTH CAROLINA 29303 TITLE GENERAL ARRANGEMENT 'INPM' TYPE DOUBLE BLOCK & BLEED NEEDLE VALVE MANIFOLD SIZE A31 SCALE N.T.S. DWG NO. A18833 SHEET 1 OF 1