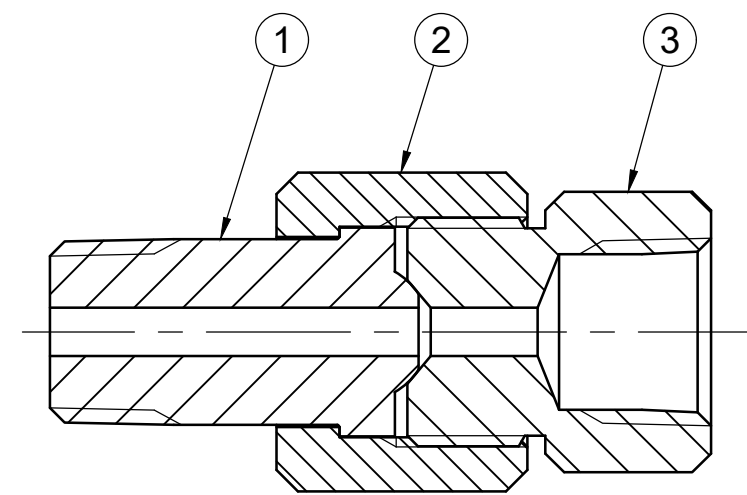
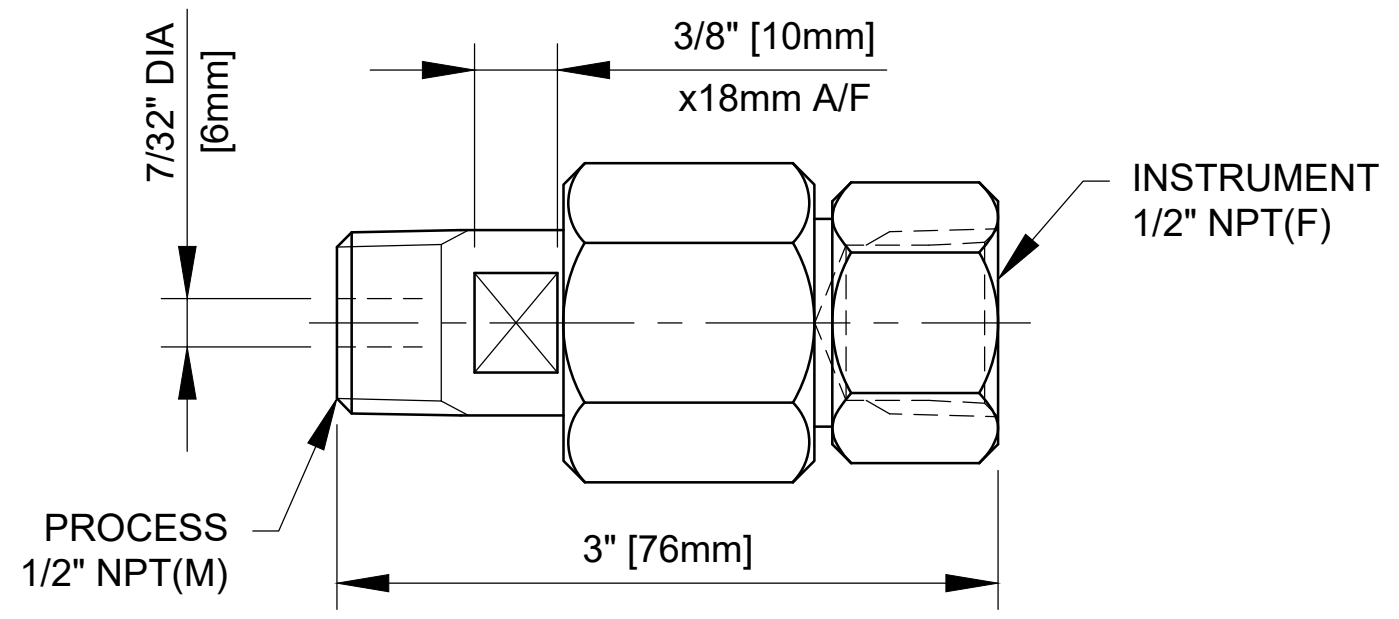
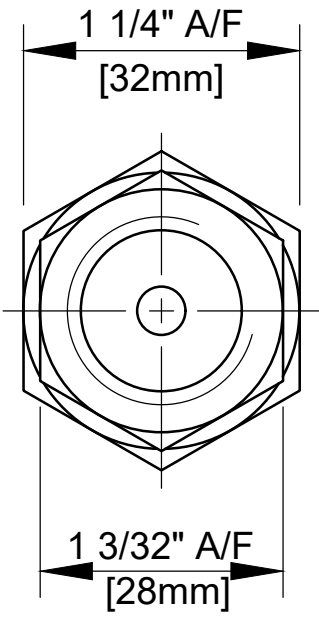


MAXIMUM WORKING CONDITIONS
COLD WORKING PRESSURE:
 STANDARD, 6,000PSI (414BAR)
 (AT REDUCED TEMPERATURE)

TEMPERATURE:
 TITANIUM -
 -29°C (-20.2°F) TO 315°C (599°F)
 (AT REDUCED PRESSURE)

APPROX WEIGHT
 0.2 Kg



MARKING DETAILS
 (MARKING REFERENCE ONLY)



- REMARK**
- ADDITIONAL TAG PLATE FOR ADDITIONAL INFO UPON REQUESTED
 - HCT HEAT CODE TRACEABILITY WILL BE MARKED ON BODY & END FITTINGS

REF No:	DESCRIPTION	MATERIAL
		TITANIUM
1	GAUGE ADAPTOR INLET	ASTM B348 GR5
2	SWIVEL NUT	ASTM B348 GR5
3	GAUGE ADAPTOR OUTLET	ASTM B348 GR5

THE INFORMATION CONTAINED IN THIS DRAWING IS THE PROPERTY OF CRANE COMPANY. ANY REPRODUCTION IN PART OR AS A WHOLE WITHOUT THE WRITTEN PERMISSION OF CRANE COMPANY IS PROHIBITED.	APPROVALS		DATE	SPARTANBURG, SOUTH CAROLINA 29303
	CREATED	ZL	09/10/2023	
REMOVE ALL BURRS, DO NOT SCALE DRAWING, DRILL POINTS STD	DRAWN	ZL	09/10/2023	TITLE GENERAL ARRANGEMENT GAUGE ADAPTER
BREAK CORNERS 0.005 - 0.010	APPROVED	JQ	12/10/2023	
UNLESS OTHERWISE SPECIFIED, DIMENSIONS ARE IN INCHES TOLERANCES ARE: .XXX +.005 ANGLES ±.41° .XX +.010 CONCENTRICITY ±.0015 .X +.060 MACHINE FINISH: 63RMS	EC NUMBER	X		SIZE A3
	INITIAL USAGE (REF ONLY)	X		SCALE N.T.S.
	CAD FILE NAME			DWG NO. A18708 SHEET 1 OF 1