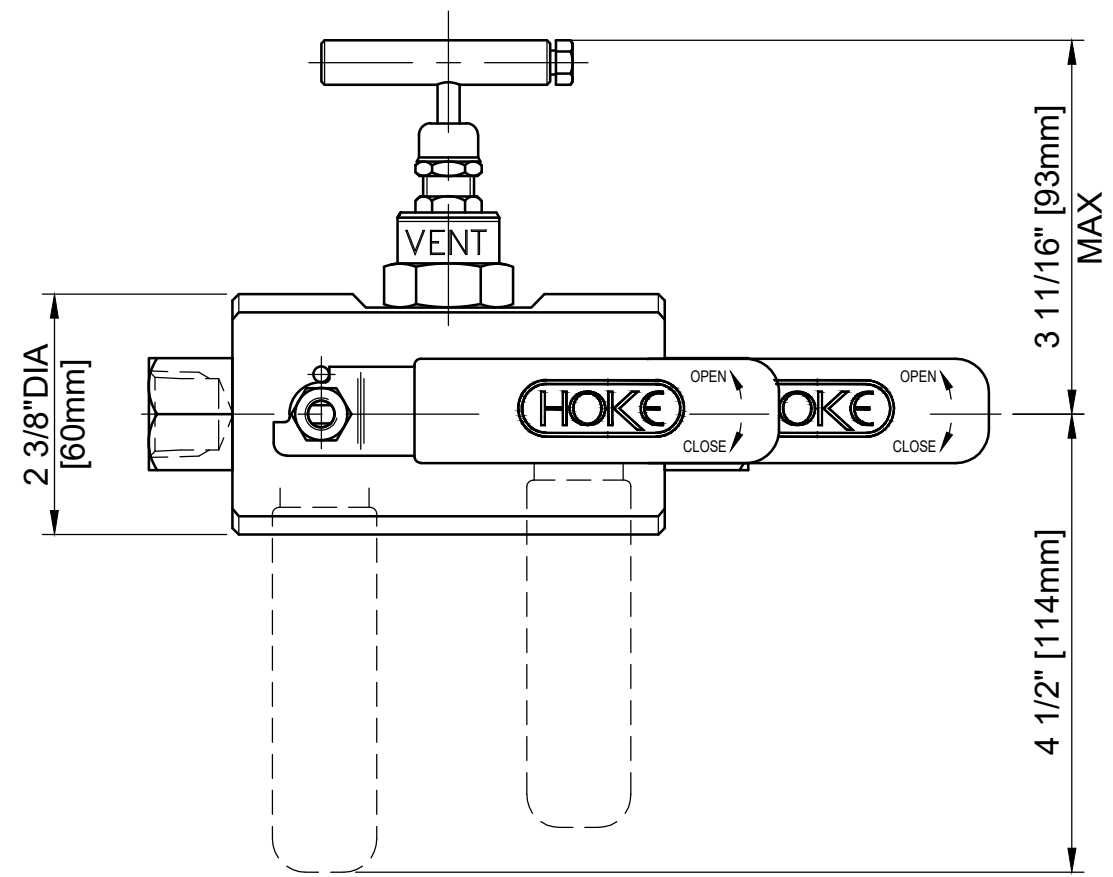


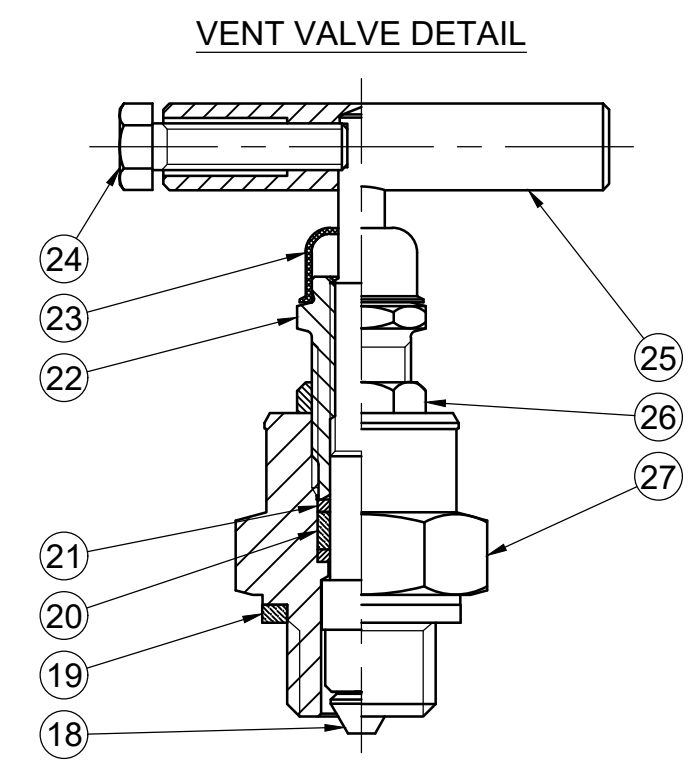
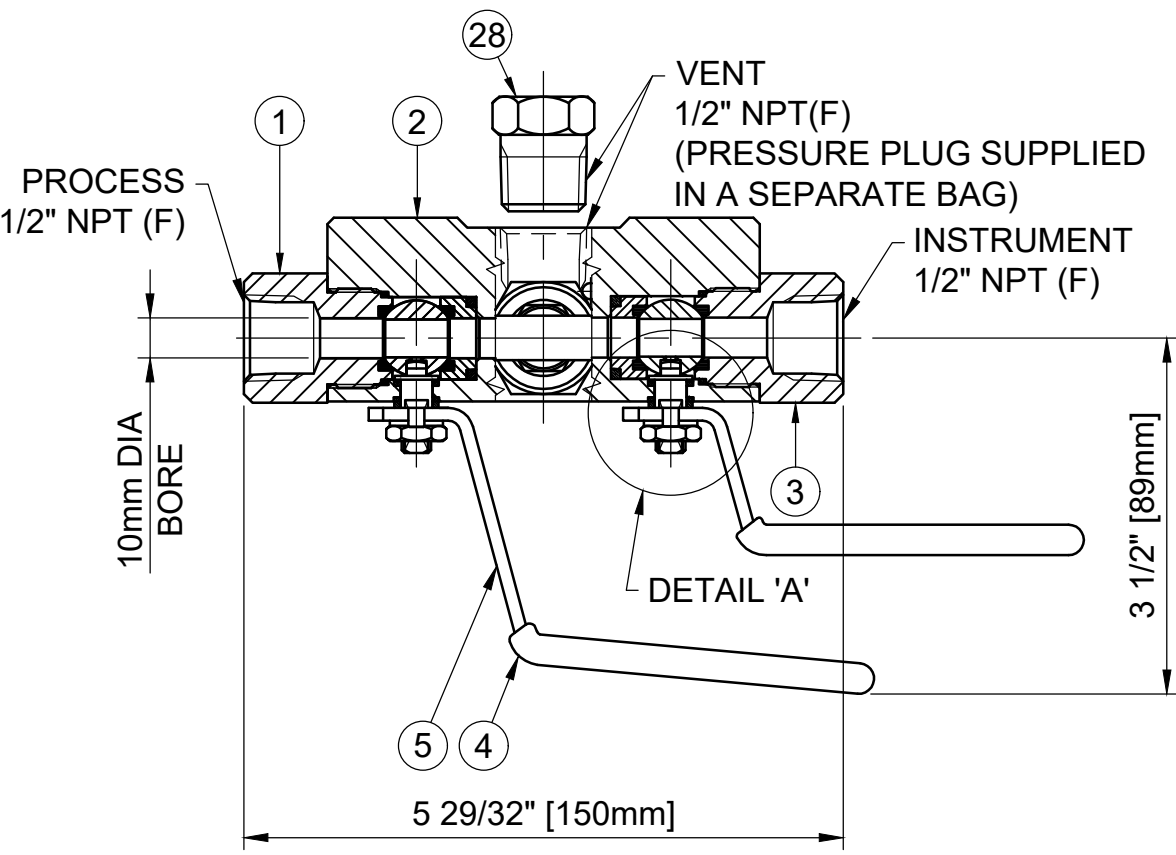
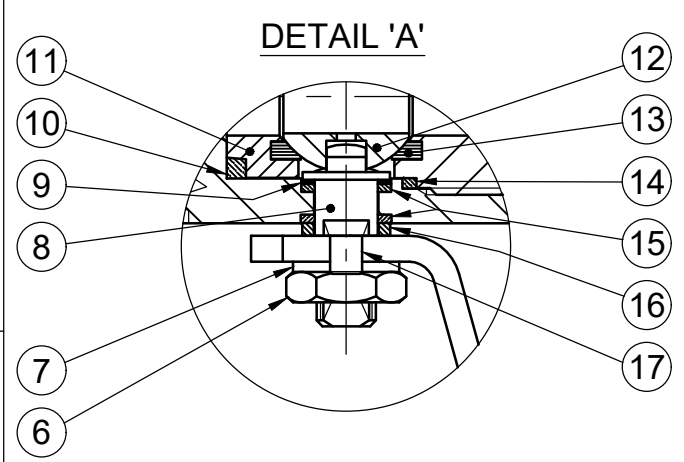
**MAXIMUM WORKING CONDITIONS**  
 COLD WORKING PRESSURE:  
 STANDARD, 6,000PSI (414BAR)  
 (AT REDUCED TEMPERATURE)

TEMPERATURE:  
 -29°C (-20.2°F) TO 200°C (392°F)  
 (AT REDUCED PRESSURE)

APPROX WEIGHT  
 2.4Kg



| REF No | DESCRIPTION          | MATERIAL                    |
|--------|----------------------|-----------------------------|
|        |                      | 6MO                         |
| 1      | PROCESS CONNECTOR    | ASTM A276/A479 UNS S31254   |
| 2      | BODY                 | ASTM A276/A479 UNS S31254   |
| 3      | INSTRUMENT CONNECTOR | ASTM A276/A479 UNS S31254   |
| 4      | SLEEVE               | PVC                         |
| 5      | HANDLE               | 316 SS                      |
| 6      | NUT                  | A4 [316] SS                 |
| 7      | SERRATED WASHER      | 316 SS                      |
| 8      | SPINDLE              | ASTM B446 UNS N06625        |
| 9      | THRUST SEAL          | 25% GLASS FILLED PTFE       |
| 10     | SEAT CARRIER SEAL    | GRAPHITE                    |
| 11     | SEAT CARRIER         | ASTM A276/A479 UNS S31254   |
| 12     | BALL                 | ASTM A276/A479 UNS S31254   |
| 13     | SEAT                 | 25% GLASS FILLED PTFE/PCTFE |
| 14     | BODY SEAL            | 100% VIRGIN PTFE            |
| 15     | SPINDLE SEAL         | 15% GLASS FILLED PTFE       |
| 16     | PISTON RING          | 316 SS                      |
| 17     | HANDLE STOP PIN      | 316 SS                      |
| 18     | SPINDLE&TIP          | ASTM B446 UNS N06625        |
| 19     | BODY SEAL            | GRAPHITE                    |
| 20     | SEAL BUSH            | GRAPHITE                    |
| 21     | PISTON RING          | UNS N06625                  |
| 22     | PUSHER               | 316 SS                      |
| 23     | DUST CAP             | LOTREX 2300                 |
| 24     | SCREW                | A4 [316] SS                 |
| 25     | TEE BAR              | 316 SS                      |
| 26     | LOCKNUT              | 316 SS                      |
| 27     | SEAL HOUSING         | ASTM A276/A479 UNS S31254   |
| 28     | PRESSURE PLUG        | ASTM A276/A479 UNS S31254   |



MARKING DETAILS  
 (MARKING REFERENCE ONLY)



REMARK

- ADDITIONAL TAG PLATE FOR ADDITIONAL INFO UPON REQUESTED
- HCT HEAT CODE TRACEABILITY WILL BE MARKED ON BODY & END FITTINGS

|   |  |                          |    |            |  |
|---|--|--------------------------|----|------------|--|
| THE INFORMATION CONTAINED IN THIS DRAWING IS THE PROPERTY OF CRANE COMPANY. ANY REPRODUCTION IN PART OR AS A WHOLE WITHOUT THE WRITTEN PERMISSION OF CRANE COMPANY IS PROHIBITED. |  | APPROVALS                |    | DATE       |  |
| REMOVE ALL BURRS, DO NOT SCALE DRAWING, DRILL POINTS STD  |  | CREATED                  | JQ | 16/10/2023 |  |
| BREAK CORNERS 0.005 - 0.010   |  | DRAWN                    | JQ | 16/10/2023 | TITLE GENERAL ARRANGEMENT - 10mm BORE 'ID' TYPE DOUBLE BLOCK & BLEED MANIFOLD. |
| UNLESS OTHERWISE SPECIFIED, DIMENSIONS ARE IN INCHES  |  | APPROVED                 | ZL | 18/10/2023 |  |
| TOLERANCES ARE:<br>.XXX +.005 ANGLES ±.1°<br>.XX +.010 CONCENTRICITY ±.015<br>.X +.060 MACHINE FINISH: 63RMS  |  | EC NUMBER                | X  |            | SIZE A3<br>SCALE N.T.S.  |
|   |  | INITIAL USAGE (REF ONLY) | X  |            | DWG NO. A18679<br>SHEET 1 OF 1   |
|   |  | CAD FILE NAME            |    |            | REV B  |